



NEWINGTON
LONDON

2 Bedrooms

Apartment

Located in London

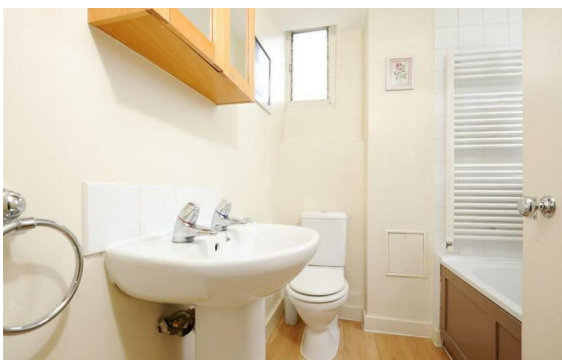
£670 Per Month



info@newingtonstates.com

<http://www.newingtonstates.com>

020 7724 2233



A bright two bedroom property located in the desirable Gloucester Square W2. Just minutes walking distance from Paddington Station and Hyde Park. With an abundance of natural light the property comprises of a good size living area. To the front of the property is a kitchen with built in appliances and the master bedroom with great built in wardrobes. The second bedroom again is a very good size and provides plenty of built in storage.

Located just minutes walking distance from Paddington Train station, Lancaster Gate and Hyde park the property is ideally located for both business and leisure. EPC RATING: C

Energy Efficiency Rating:

Agents Note: Whilst every care has been taken to prepare these particulars, they are for guidance purposes only. All measurements are approximate and are for general guidance purposes only and whilst every care has been taken to ensure their accuracy, they should not be relied upon and potential buyers/tenants are advised to recheck the measurements.

NEWINGTON LONDON

60 Upper Montagu Street

London

W1H 1SN

020 7724 2233

info@newingtonstates.com

<http://www.newingtonstates.com>