



NEWINGTON
LONDON

1 Bedrooms

Apartment

Located in London

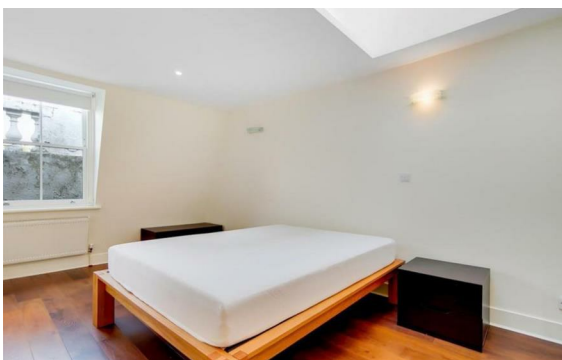
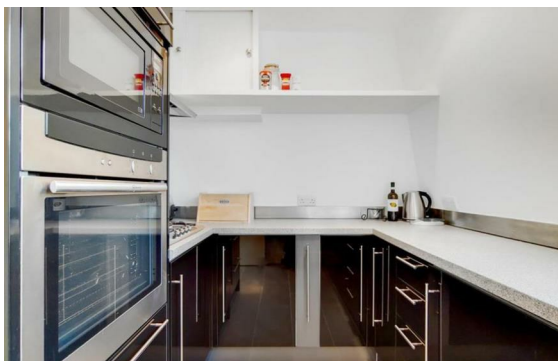
£665 Per Month



info@newingtonstates.com

<http://www.newingtonstates.com>

020 7724 2233



NEWINGTON LONDON

60 Upper Montagu Street

London

W1H 1SN

020 7724 2233

info@newingtonestates.com

Newington Estates are delighted to present you this bright newly refurbished one bedroom apartment to the rental market. Situated in a well maintained period property located in the centre of Marylebone, this property boasts a bright reception room with wooden flooring, separate fully-fitted kitchen, bright bedroom with built in storage and a family bathroom.

George Street is ideally positioned a stones throw from the local shops and amenities of Marylebone High Street and Baker Street. EPC RATING: C

Energy Efficiency Rating:

Agents Note: Whilst every care has been taken to prepare these particulars, they are for guidance purposes only. All measurements are approximate and are for general guidance purposes only and whilst every care has been taken to ensure their accuracy, they should not be relied upon and potential buyers/tenants are advised to recheck the measurements.

<http://www.newingtonestates.com>