



NEWINGTON  
LONDON

1 Bedrooms

Apartment

Located in London

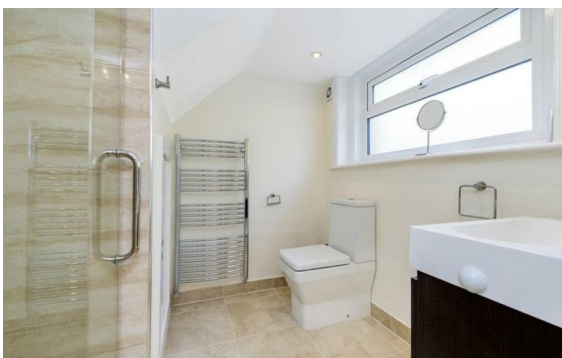
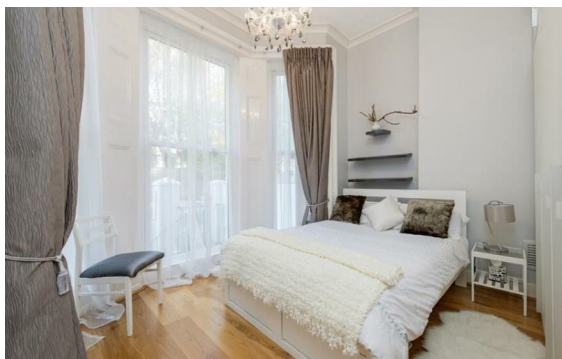
£1,050 Per Month



[info@newingtonstates.com](mailto:info@newingtonstates.com)

<http://www.newingtonstates.com>

020 7724 2233



We are delighted to offer a refurbished one bedroom apartment with AC and porter located on the second floor of this sought-after well run period building with a lift. Located a stone's throw away from the two Michelin starred Le Gavroche this one-bedroom is perfect for anyone single occupant or pier de terre.

Location Upper Brook is set north of Grosvenor Square and a short walk to Hyde Park and Bond Street Station and Marble Arch. You are also a short walk from the world-famous Oxford Street and Mount Street.

EPC rating: D

## Energy Efficiency Rating: D

Agents Note: Whilst every care has been taken to prepare these particulars, they are for guidance purposes only. All measurements are approximate and are for general guidance purposes only and whilst every care has been taken to ensure their accuracy, they should not be relied upon and potential buyers/tenants are advised to recheck the measurements.

# NEWINGTON LONDON

60 Upper Montagu Street

London

W1H 1SN

020 7724 2233

[info@newingtonstates.com](mailto:info@newingtonstates.com)

<http://www.newingtonstates.com>