



NEWINGTON
LONDON

2 Bedrooms

Apartment

Located in London

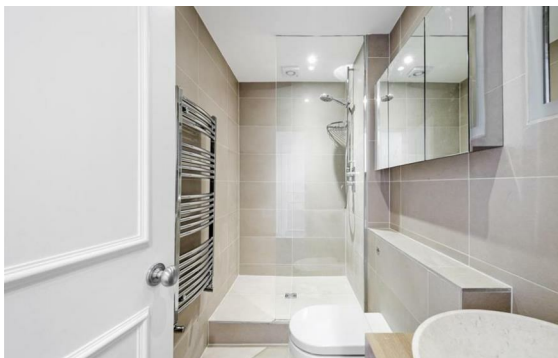
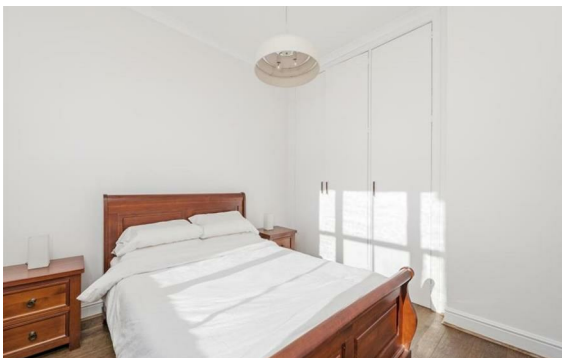
£1,000 Per Month



info@newingtonstates.com

<http://www.newingtonstates.com>

020 7724 2233



Welcome to this charming apartment located on Park Road in the heart of London! This property boasts two spacious reception rooms, perfect for entertaining guests. With two cosy bedrooms and two bathrooms, this apartment offers ample space for comfortable living.

The modern kitchen is a fully integrated, providing a stylish and functional space. Additionally, the extra dining room or reception area offers versatility in how you can utilise the space to suit your lifestyle needs.

Situated in a prime location, this apartment is ideal for those looking to immerse themselves in the vibrant energy of London. Whether you're seeking a cozy home to unwind in after a busy day or a stylish space to host gatherings, this property offers the perfect blend of comfort and convenience. Located conveniently for Regent's Park, Marylebone and the West end. Situated moments from Baker Street and Marylebone Stations with excellent transport links in and around London. EPC RATING: C

Energy Efficiency Rating:

Agents Note: Whilst every care has been taken to prepare these particulars, they are for guidance purposes only. All measurements are approximate and are for general guidance purposes only and whilst every care has been taken to ensure their accuracy, they should not be relied upon and potential buyers/tenants are advised to recheck the measurements.

NEWINGTON LONDON

60 Upper Montagu Street

London

W1H 1SN

020 7724 2233

info@newingtonstates.com

<http://www.newingtonstates.com>