



NEWINGTON  
LONDON

1 Bedrooms

Apartment

Located in London

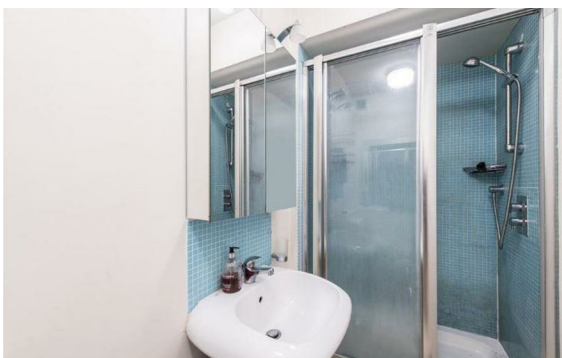
£615 Per Week



info@newingtonstates.com

<http://www.newingtonstates.com>

020 7724 2233



Newington Estates are delighted to present you this spacious one bedroom flat is located within this popular 24hr portered block, located moments from Oxford Street. The flat comprises one double bedroom, large newly fitted kitchen, bathroom, fully fitted and equipped kitchen with washing machine and microwave and reception with TV dining area.

The block benefits from a lift and 24hr portorage. The property provides easy access to Oxford Street, Marble Arch, Edgware Road and Hyde Park. The underground gives easy access to the City and London's main attractions along with a multitude of restaurants and bars in the surrounding areas. EPC RATING: C

### Energy Efficiency Rating:

Agents Note: Whilst every care has been taken to prepare these particulars, they are for guidance purposes only. All measurements are approximate and are for general guidance purposes only and whilst every care has been taken to ensure their accuracy, they should not be relied upon and potential buyers/tenants are advised to recheck the measurements.

# NEWINGTON LONDON

60 Upper Montagu Street

London

W1H 1SN

020 7724 2233

[info@newingtonestates.com](mailto:info@newingtonestates.com)

<http://www.newingtonestates.com>