



NEWINGTON LONDON

2 Bedrooms

Apartment

Located in London

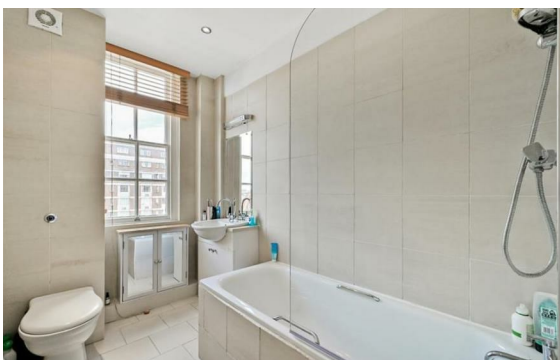
£920 Per Month



info@newingtonstates.com

<http://www.newingtonstates.com>

020 7724 2233



Newington Estates are delighted to present you this smart flat apartment on the third floor, within a white stucco fronted building less than fifty metres from Hyde Park. This contemporary apartment benefits from wood flooring, two double bedrooms, fully integrated kitchen, ample storage and offers south facing views. The building benefits from a lift and smart communal areas.

Hyde Park Street is perfectly placed. You can easily get to Paddington, Bayswater and Lancaster Gate Stations. The Elizabeth Line will connect you to Heathrow Airport or Paris via the Eurostar. EPC RATING: C

Energy Efficiency Rating: C

Agents Note: Whilst every care has been taken to prepare these particulars, they are for guidance purposes only. All measurements are approximate and are for general guidance purposes only and whilst every care has been taken to ensure their accuracy, they should not be relied upon and potential buyers/tenants are advised to recheck the measurements.

NEWINGTON LONDON

60 Upper Montagu Street

London

W1H 1SN

020 7724 2233

info@newingtonestates.com

<http://www.newingtonestates.com>