



NEWINGTON
LONDON

1 Bedrooms

Apartment

Located in London

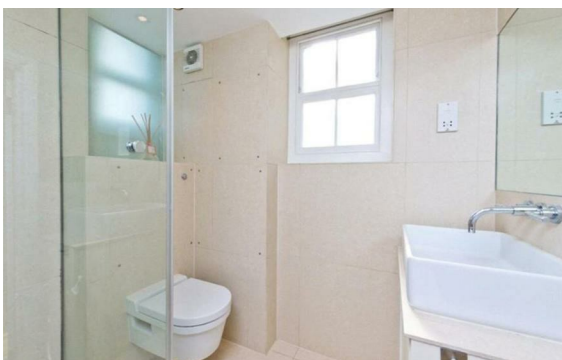
£625 Per Month



info@newingtonstates.com

<http://www.newingtonstates.com>

020 7724 2233



Newingtons are delighted to present you this modern one apartment consists of a large double bedroom with built in wardrobes, modern bathroom and a good sized light and airy reception room with wooden floors.

Crawford Street is perfectly located in the heart of Marylebone close to the shops on Oxford Street, Marylebone Village, Baker Street Underground and the green open space of Hyde Park and Regent's Park. Marylebone station (0.2 miles), Baker Street (0.2 miles) and Edgware Road (Circle, District, Hammersmith and City) (0.4 miles). All times and distances quoted are approximate. EPC RATING: C

Energy Efficiency Rating:

Agents Note: Whilst every care has been taken to prepare these particulars, they are for guidance purposes only. All measurements are approximate and are for general guidance purposes only and whilst every care has been taken to ensure their accuracy, they should not be relied upon and potential buyers/tenants are advised to recheck the measurements.

NEWINGTON LONDON

60 Upper Montagu Street

London

W1H 1SN

020 7724 2233

info@newingtonstates.com

<http://www.newingtonstates.com>