



NEWINGTON  
LONDON

1 Bedrooms

Apartment

Located in London

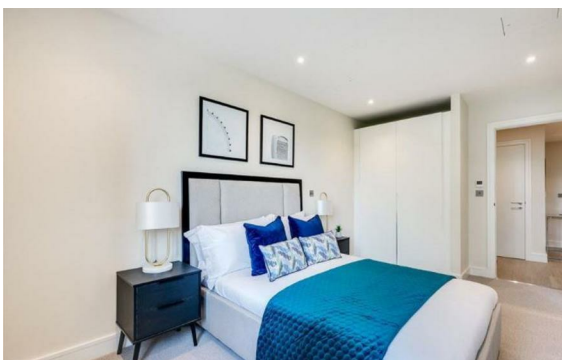
£760 Per Month



info@newingtonstates.com

<http://www.newingtonstates.com>

020 7724 2233



A stunning one-bedroom apartment located within this prestigious development set within the heart of Paddington Basin. This unique apartment comprises a spacious living and entertaining open plan kitchen and reception area with the Canal views, a double bedroom, a guest cloakroom, guest bathroom and ample storage space.

The apartment offers easy access to superb transport links such as Paddington Train Station (Bakerloo, Hammersmith & City, Circle, District lines and Heathrow) Edgware Road (Circle, District and Bakerloo lines). EPC RATING: B

### Energy Efficiency Rating: B

Agents Note: Whilst every care has been taken to prepare these particulars, they are for guidance purposes only. All measurements are approximate and are for general guidance purposes only and whilst every care has been taken to ensure their accuracy, they should not be relied upon and potential buyers/tenants are advised to recheck the measurements.

# NEWINGTON LONDON

60 Upper Montagu Street

London

W1H 1SN

020 7724 2233

[info@newingtonstates.com](mailto:info@newingtonstates.com)

<http://www.newingtonstates.com>