



NEWINGTON  
LONDON

2 Bedrooms

Apartment

Located in London

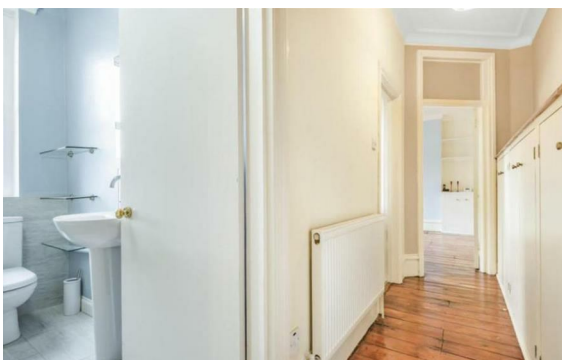
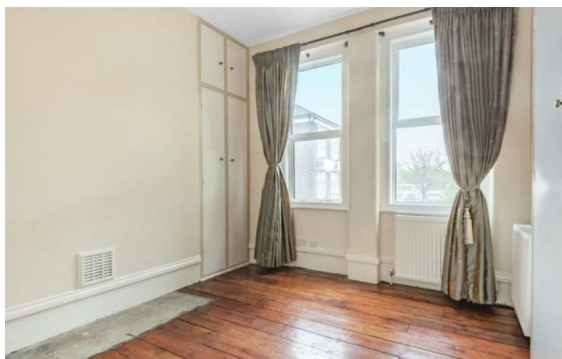
£600 Per Month



info@newingtonstates.com

<http://www.newingtonstates.com>

020 7724 2233



A spacious two-bedroom apartment situated in a popular mansion block close Marylebone Tube and Train Station. Comprising of two bedrooms, one family bathroom, spacious reception room with wooden flooring throughout and well equipped kitchen with ample storage.

Building is located within a short walk to Marylebone High Street with its various shops, bars and restaurants and is close to both Baker Street and Marylebone stations.

EPC rating: C

### Energy Efficiency Rating: C

Agents Note: Whilst every care has been taken to prepare these particulars, they are for guidance purposes only. All measurements are approximate and are for general guidance purposes only and whilst every care has been taken to ensure their accuracy, they should not be relied upon and potential buyers/tenants are advised to recheck the measurements.

# NEWINGTON LONDON

60 Upper Montagu Street

London

W1H 1SN

020 7724 2233

[info@newingtonstates.com](mailto:info@newingtonstates.com)

<http://www.newingtonstates.com>