



NEWINGTON
LONDON

0 Bedrooms

Studio

Located in London

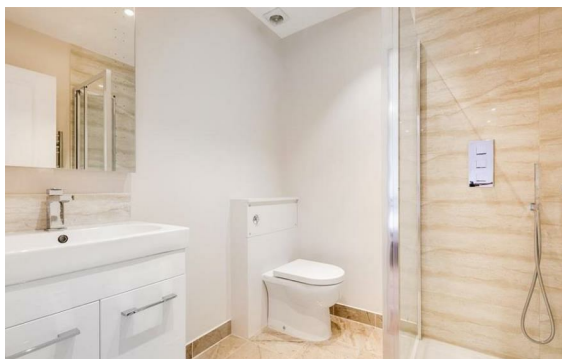
£560 Per Month



info@newingtonstates.com

<http://www.newingtonstates.com>

020 7724 2233



NEWINGTON LONDON

60 Upper Montagu Street

London

W1H 1SN

020 7724 2233

info@newingtonstates.com

The newly refurbished second floor studio apartment is bright and spacious and is perfectly located within close proximity of Regent's Park and Great Portland Street Station. Comprising of fully fitted kitchen, modern bathroom and spacious reception/bedroom with new wooden flooring throughout.

Property is superbly located offering easy access to world class shopping, Michelin star restaurants and the open spaces of Regent's Park.

EPC rating: D

Energy Efficiency Rating: D

Agents Note: Whilst every care has been taken to prepare these particulars, they are for guidance purposes only. All measurements are approximate and are for general guidance purposes only and whilst every care has been taken to ensure their accuracy, they should not be relied upon and potential buyers/tenants are advised to recheck the measurements.

<http://www.newingtonstates.com>