



NEWINGTON LONDON

3 Bedrooms

Apartment

Located in London

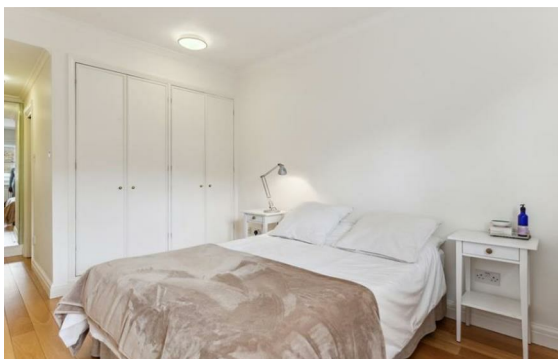
£1,020 Per Month



info@newingtonstates.com

<http://www.newingtonstates.com>

020 7724 2233



NEWINGTON LONDON

60 Upper Montagu Street

London

W1H 1SN

020 7724 2233

info@newingtonstates.com

An extremely spacious three-bedroom, duplex apartment offered in great condition benefitting from a private balcony and separate work from home office area. The property comprises an entrance hallway, large reception room, kitchen and balcony: ample home office space, three/two bedrooms, bathroom and a separate WC.

The property is located on Robert Street, providing easy access to Great Portland Street Station and the open spaces of Regent's Park.

EPC rating: C

Energy Efficiency Rating: C

Agents Note: Whilst every care has been taken to prepare these particulars, they are for guidance purposes only. All measurements are approximate and are for general guidance purposes only and whilst every care has been taken to ensure their accuracy, they should not be relied upon and potential buyers/tenants are advised to recheck the measurements.

<http://www.newingtonstates.com>