



NEWINGTON  
LONDON

1 Bedrooms

Apartment

Located in London

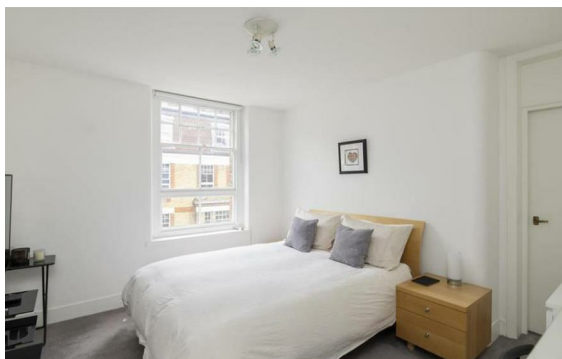
£730 Per Month



info@newingtonstates.com

<http://www.newingtonstates.com>

020 7724 2233



A fantastic one-bedroom apartment that offers generous living space with beautiful modern design and high ceiling moments from Oxford Street. Comprising of double bedroom, spacious bathroom and fully fitted kitchen leading into well maintained reception room.

Hyde Park is on the doorstep, as are the fashionable shops, bars, cafes, and restaurants found around Oxford Street, Connaught Village, Marylebone High Street, and Baker Street.

EPC rating: D

## Energy Efficiency Rating: D

Agents Note: Whilst every care has been taken to prepare these particulars, they are for guidance purposes only. All measurements are approximate and are for general guidance purposes only and whilst every care has been taken to ensure their accuracy, they should not be relied upon and potential buyers/tenants are advised to recheck the measurements.

# NEWINGTON LONDON

60 Upper Montagu Street

London

W1H 1SN

020 7724 2233

[info@newingtonstates.com](mailto:info@newingtonstates.com)

<http://www.newingtonstates.com>