



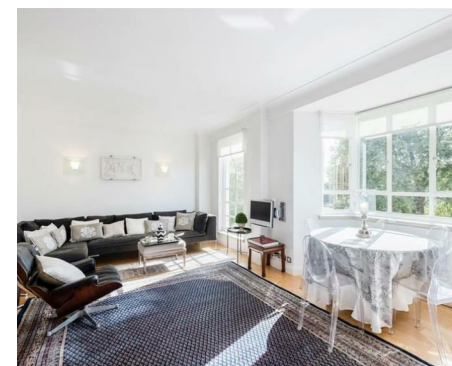
## NEWINGTON LONDON

4 Bedrooms

Apartment

Located in London

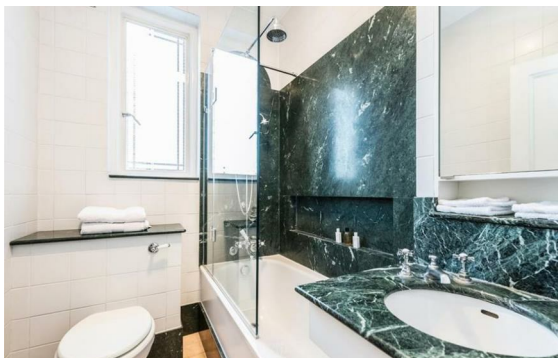
£1,275 Per Month



info@newingtonstates.com

<http://www.newingtonstates.com>

020 7724 2233



# NEWINGTON LONDON

60 Upper Montagu Street

London

W1H 1SN

020 7724 2233

[info@newingtonstates.com](mailto:info@newingtonstates.com)

Newingtons are delighted to present you this four-bedroom apartment in a portered building, boasting a private balcony. This well presented four-double-bedroom apartment is within this portered period block next to Marylebone Station. The property has wood floors throughout and boasts a large bright living room, four spacious double bedrooms with ample storage and on en-suite, a separate kitchen and full family bathroom.

The property is located well for all the amenities of the area including the bars, restaurants and sought-after shops. Marylebone High street is a short walk away with green spaces easily reached at Regents Park and Hyde Park. The nearest station is Marylebone (Overground, Metropolitan & Bakerloo) and Baker Street station is no more than ten minutes away. (Bakerloo, Jubilee, District, Circle, Hammersmith & City. EPC RATING: B

## Energy Efficiency Rating:

Agents Note: Whilst every care has been taken to prepare these particulars, they are for guidance purposes only. All measurements are approximate and are for general guidance purposes only and whilst every care has been taken to ensure their accuracy, they should not be relied upon and potential buyers/tenants are advised to recheck the measurements.

<http://www.newingtonstates.com>