



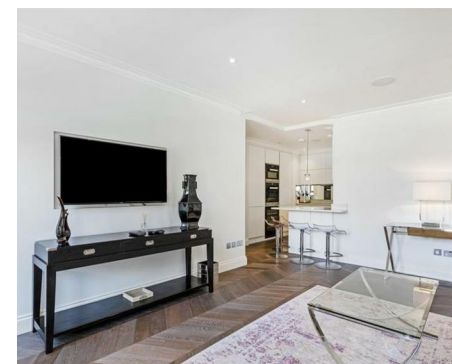
NEWINGTON
LONDON

2 Bedrooms

Apartment

Located in London

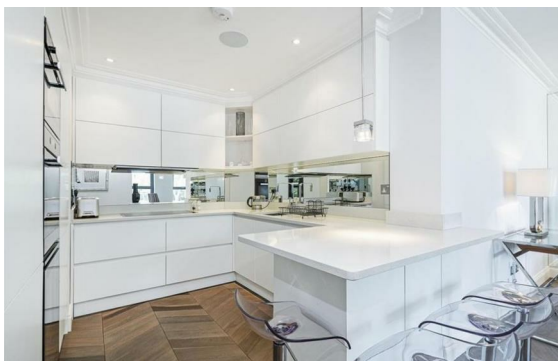
£1,160 Per Month



info@newingtonstates.com

<http://www.newingtonstates.com>

020 7724 2233



This is a superb lateral apartment with excellent ceiling volumes throughout and bright rooms. The apartment is situated within a secluded block set on a quiet residential street just off of the bustling Great Portland Street. Comprising of a large and bright reception, two double bedrooms, two bathrooms (one of which is en suite), a modern kitchen with excellent appliances and plenty of storage. The property further benefits from the buildings passenger lift.

The property is located on Hallam Street, which is nestled between Great Portland Street & Portland Place. In addition to Great Portland Street being on your doorstep, Marylebone Village is less than 0.4 miles away, and world-renowned Oxford Street just 0.6 miles away. All of which provide world class amenities, with their array of exceptional shops, cafes and restaurants. Great Portland Street Tube is the nearest station which is only 0.1 miles away from the apartment and supplies an efficient commute across the capital. EPC RATING: C

Energy Efficiency Rating:

Agents Note: Whilst every care has been taken to prepare these particulars, they are for guidance purposes only. All measurements are approximate and are for general guidance purposes only and whilst every care has been taken to ensure their accuracy, they should not be relied upon and potential buyers/tenants are advised to recheck the measurements.

NEWINGTON LONDON

60 Upper Montagu Street

London

W1H 1SN

020 7724 2233

info@newingtonstates.com

<http://www.newingtonstates.com>