



NEWINGTON
LONDON

1 Bedrooms

Apartment

Located in London

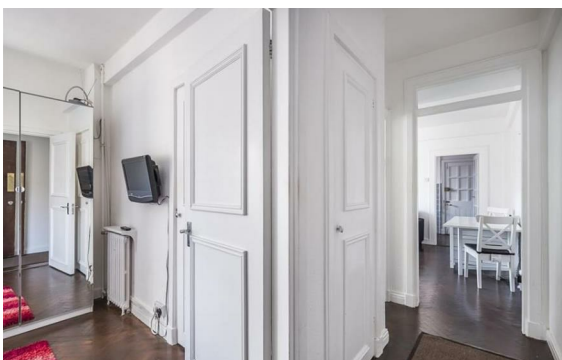
£670 Per Month



info@newingtonstates.com

<http://www.newingtonstates.com>

020 7724 2233



A well presented one-bedroom apartment situated on the 2nd floor of the purpose built block featuring lift access and porter. Comprising of one double bedroom, modern bathroom, spacious reception room with gorgeous parquet flooring and fully fitted kitchen. Property benefits from the high ceilings and large windows allowing plenty of natural light in.

This property boasts close proximity to the fashionable shops and restaurants of Marylebone (0.5 miles), the green open space of Regent's Park (0.2 miles), Baker Street (0.2 miles) and Marylebone Stations (0.4 miles) are both within walking distance.

EPC rating: C

Energy Efficiency Rating: C

Agents Note: Whilst every care has been taken to prepare these particulars, they are for guidance purposes only. All measurements are approximate and are for general guidance purposes only and whilst every care has been taken to ensure their accuracy, they should not be relied upon and potential buyers/tenants are advised to recheck the measurements.

NEWINGTON LONDON

60 Upper Montagu Street

London

W1H 1SN

020 7724 2233

info@newingtonstates.com

<http://www.newingtonstates.com>