



NEWINGTON
LONDON

2 Bedrooms

Apartment

Located in London

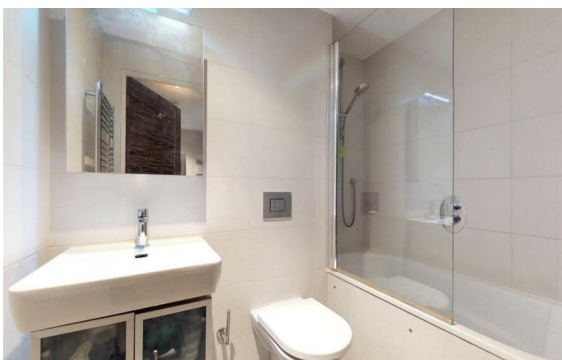
£795 Per Month



info@newingtonstates.com

<http://www.newingtonstates.com>

020 7724 2233



Description Boasting a superb central location, this fabulous two bedroom flat is situated on the ground floor of this impressive portered block in Marylebone close to many amenities. The property benefits from large bright reception room with wood flooring and generous dining area, separate fully equipped kitchen, two bedrooms, two bathrooms, secure entry system, and outdoor space.

Harewood Avenue is just moments from the convenient transport links of Marylebone Station (British Rail, Bakerloo Line), whilst the shops, bars and restaurants of St Johns Wood and the West End are also close by. EPC RATING : C

Energy Efficiency Rating:

Agents Note: Whilst every care has been taken to prepare these particulars, they are for guidance purposes only. All measurements are approximate and are for general guidance purposes only and whilst every care has been taken to ensure their accuracy, they should not be relied upon and potential buyers/tenants are advised to recheck the measurements.

NEWINGTON LONDON

60 Upper Montagu Street

London

W1H 1SN

020 7724 2233

info@newingtonstates.com

<http://www.newingtonstates.com>