



NEWINGTON
LONDON

1 Bedrooms

Studio

Located in London

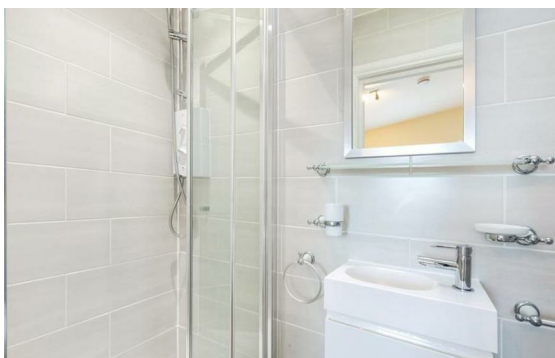
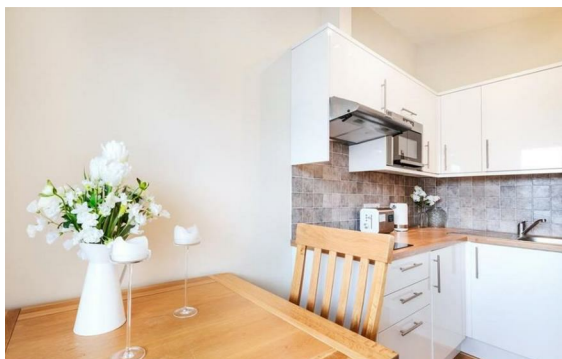
£570 Per Month



info@newingtonstates.com

<http://www.newingtonstates.com>

020 7724 2233



This newly refurbished first floor studio apartment is bright and spacious and is perfectly located within close proximity of Regent's Park and Great Portland Street Station. The apartment has just undergone a full refurbishment, to include new wooden flooring throughout, new modern kitchen and new contemporary bathroom. Building building benefits from concierge services, communal gardens, conference room.

Located conveniently for Regents Park and the West End with superb transport links and plenty of amenities.

EPC rating: D

Energy Efficiency Rating: D

Agents Note: Whilst every care has been taken to prepare these particulars, they are for guidance purposes only. All measurements are approximate and are for general guidance purposes only and whilst every care has been taken to ensure their accuracy, they should not be relied upon and potential buyers/tenants are advised to recheck the measurements.

NEWINGTON LONDON

60 Upper Montagu Street

London

W1H 1SN

020 7724 2233

info@newingtonstates.com

<http://www.newingtonstates.com>