



NEWINGTON  
LONDON

2 Bedrooms

Apartment

Located in London

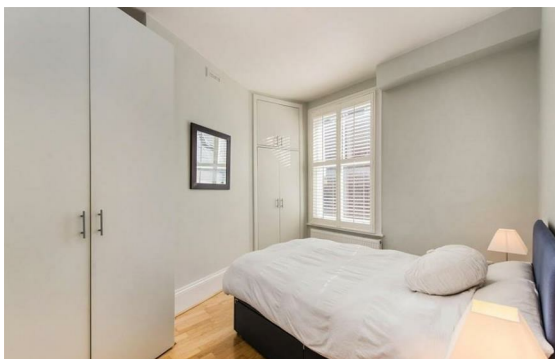
£960 Per Month



info@newingtonstates.com

<http://www.newingtonstates.com>

020 7724 2233



We are pleased to offer for rent this beautiful two-bedroom apartment situated on the fourth floor of this desirable building with 24 hour porter ideally located moments from both Baker Street and Marylebone stations. Comprising of two double bedrooms with built-in storage, 2 luxury bathrooms, spacious reception room with brand new furniture and dining area leading into well equipped and fully fitted kitchen with plenty of storage throughout.

Chalfont Court is located in close proximity to the amenities of Marylebone High Street, as well as excellent transport links such as Marylebone and Baker Street stations.

EPC rating: C

## Energy Efficiency Rating: C

Agents Note: Whilst every care has been taken to prepare these particulars, they are for guidance purposes only. All measurements are approximate and are for general guidance purposes only and whilst every care has been taken to ensure their accuracy, they should not be relied upon and potential buyers/tenants are advised to recheck the measurements.

# NEWINGTON LONDON

60 Upper Montagu Street

London

W1H 1SN

020 7724 2233

[info@newingtonstates.com](mailto:info@newingtonstates.com)

<http://www.newingtonstates.com>