



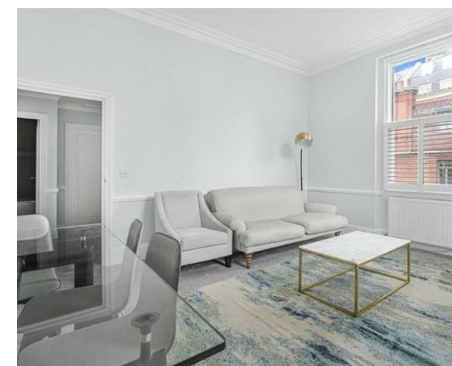
NEWINGTON  
LONDON

1 Bedrooms

Apartment

Located in London

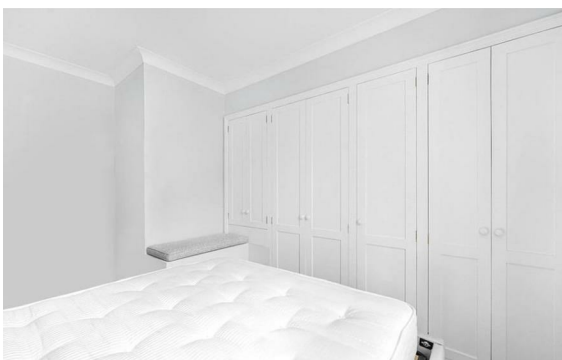
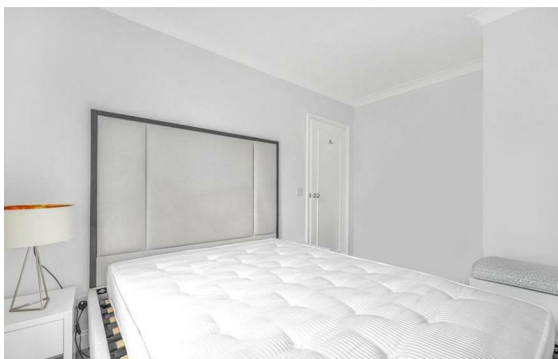
£560 Per Month



info@newingtonstates.com

<http://www.newingtonstates.com>

020 7724 2233



We are pleased to offer for rent this spacious fully furnished one-bedroom apartment with 24-hour portage and communal gardens. Comprising of large double bedroom, one modern bathroom, beautiful reception room with lovely sofa and dining area leading into fully fitted kitchen with great appliances. Property is situated in a purpose-built block with porter services and a communal garden.

Southwick Street being only moments away from Hyde Park, Southwick Street is situated equidistant from Mayfair and popular Notting Hill with Paddington (Bakerloo, District, Circle, Hammersmith, and City lines, British Rail and Heathrow Express), Marble Arch and Lancaster Gate (Central Line) station nearby for excellent transport links. Quick access to Liverpool Street within 15 minutes and Canary Wharf within 20 minutes.

EPC rating: D

## Energy Efficiency Rating: D

Agents Note: Whilst every care has been taken to prepare these particulars, they are for guidance purposes only. All measurements are approximate and are for general guidance purposes only and whilst every care has been taken to ensure their accuracy, they should not be relied upon and potential buyers/tenants are advised to recheck the measurements.

# NEWINGTON LONDON

60 Upper Montagu Street

London

W1H 1SN

020 7724 2233

[info@newingtonstates.com](mailto:info@newingtonstates.com)

<http://www.newingtonstates.com>