



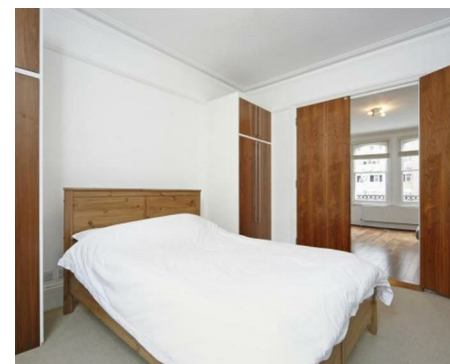
NEWINGTON
LONDON

1 Bedrooms

Apartment

Located in London

£480 Per Month



info@newingtonstates.com

<http://www.newingtonstates.com>

020 7724 2233



NEWINGTON LONDON

60 Upper Montagu Street

London

W1H 1SN

020 7724 2233

info@newingtonstates.com

A very well presented, bright and spacious, one bedroom apartment situated on the third floor of this purpose built portered building. Comprising of double bedroom, one bathroom, gorgeous reception room with plenty of space and high quality wooden flooring and well equipped kitchen featuring great appliances. Residents further benefit from the porter and lift.

Rossmore Court is a purpose built portered block located a short walk to both Baker Street and Marylebone Stations as well as the open spaces of Regent's Park. The amenities of St John's Wood are also within easy walking distance.

EPC rating: F

Energy Efficiency Rating: F

Agents Note: Whilst every care has been taken to prepare these particulars, they are for guidance purposes only. All measurements are approximate and are for general guidance purposes only and whilst every care has been taken to ensure their accuracy, they should not be relied upon and potential buyers/tenants are advised to recheck the measurements.

<http://www.newingtonstates.com>