



NEWINGTON  
LONDON

2 Bedrooms

Apartment

Located in London

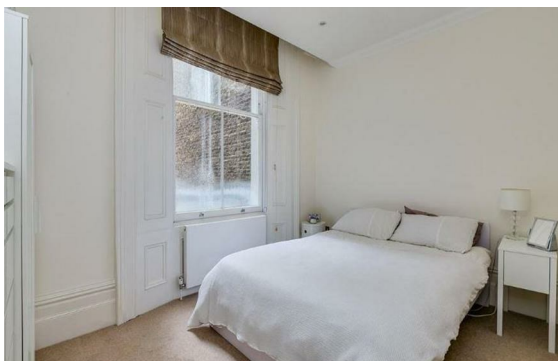
£770 Per Month



info@newingtonstates.com

<http://www.newingtonstates.com>

020 7724 2233



Stylish two double bedroom apartment with garden to rent on Gloucester Terrace, Paddington W2. Fully refurbished two bedroom apartment with one family bathroom an additional bathroom in the master bedroom. The property benefits from a generous reception room with large bay window providing ample natural light, fully equipped kitchen, two double bedrooms and two full bathrooms.

Gloucester Terrace is ideally located within easy reach of the excellent transport links of Paddington station and the open spaces of Hyde Park. EPC RATING: C

### Energy Efficiency Rating:

Agents Note: Whilst every care has been taken to prepare these particulars, they are for guidance purposes only. All measurements are approximate and are for general guidance purposes only and whilst every care has been taken to ensure their accuracy, they should not be relied upon and potential buyers/tenants are advised to recheck the measurements.

# NEWINGTON LONDON

60 Upper Montagu Street

London

W1H 1SN

020 7724 2233

[info@newingtonstates.com](mailto:info@newingtonstates.com)

<http://www.newingtonstates.com>