



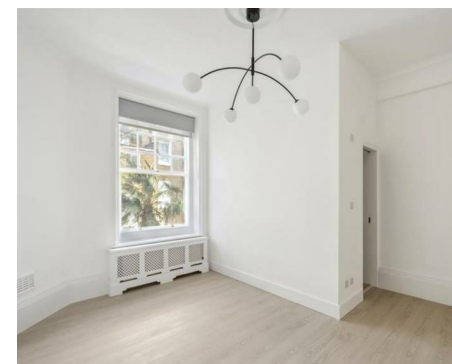
NEWINGTON
LONDON

2 Bedrooms

Apartment

Located in London

£1,125 Per Month



info@newingtonstates.com

<http://www.newingtonstates.com>

020 7724 2233



NEWINGTON LONDON

60 Upper Montagu Street
London
W1H 1SN

020 7724 2233

info@newingtonestates.com

Newington Estates are delighted to present you this spacious two bedroom apartment located on Park Road, Marylebone - a location in the heart of the city. This newly refurbished 2-bedroom apartment provides a bright and airy reception area, a fully integrated kitchen offering modern amenities and sleek design, two double bedrooms and two full bathrooms.

One of the standout features of this property is its proximity to Marylebone Station and Baker Street Station. Whether you need to commute for work or explore the city, transportation is just moments away, making your daily life a breeze. EPC RATING: C

Energy Efficiency Rating:

Agents Note: Whilst every care has been taken to prepare these particulars, they are for guidance purposes only. All measurements are approximate and are for general guidance purposes only and whilst every care has been taken to ensure their accuracy, they should not be relied upon and potential buyers/tenants are advised to recheck the measurements.

<http://www.newingtonestates.com>