

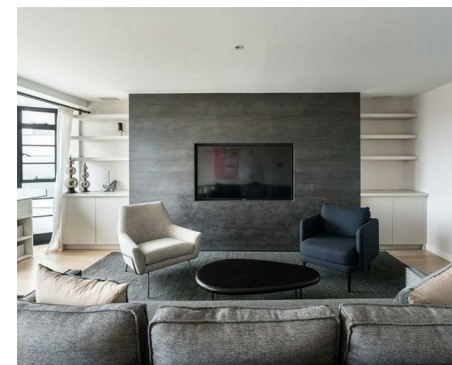
NEWINGTON  
LONDON

2 Bedrooms

Apartment

Located in London

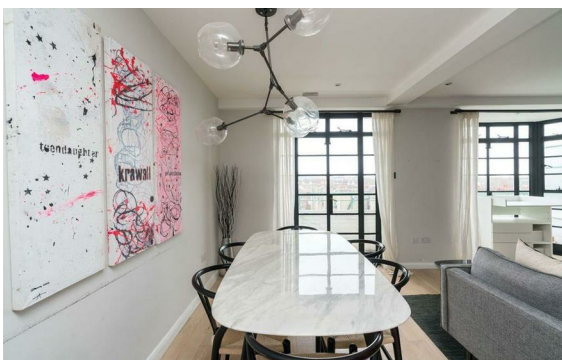
£1,200 Per Month



[info@newingtonstates.com](mailto:info@newingtonstates.com)

<http://www.newingtonstates.com>

020 7724 2233



# NEWINGTON LONDON

60 Upper Montagu Street

London

W1H 1SN

020 7724 2233

[info@newingtonstates.com](mailto:info@newingtonstates.com)

Newington Estates are delighted to present you this interior designed newly refurbished two bedroom apartment located in the heart of Marylebone. This wonderful apartment comprises of a fabulous master bedroom suite, further generous double room and separate bathroom, fabulous fitted kitchen opening onto the main reception area and further sitting/dining room.

The property is located within a 24/7 portered building located just around the corner from the green open spaces of Regents Park itself and Baker Street Tube Station (Hammersmith & City, Bakerloo, Jubilee, Circle and Metropolitan, Zone 1) offering easy access to Liverpool Street and Canary Wharf. There are plenty of supermarkets, cafes, and restaurants located along Baker Street with a further selection of boutique shops which can be found on Marylebone High Street. EPC RATING: C

## Energy Efficiency Rating: C

Agents Note: Whilst every care has been taken to prepare these particulars, they are for guidance purposes only. All measurements are approximate and are for general guidance purposes only and whilst every care has been taken to ensure their accuracy, they should not be relied upon and potential buyers/tenants are advised to recheck the measurements.

<http://www.newingtonestates.com>