



NEWINGTON
LONDON

1 Bedrooms

Apartment

Located in London

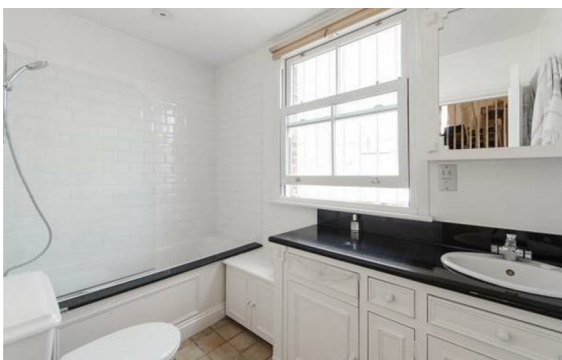
£760 Per Month



info@newingtonstates.com

<http://www.newingtonstates.com>

020 7724 2233



NEWINGTON

LONDON

60 Upper Montagu Street

London

W1H 1SN

020 7724 2233

info@newingtonstates.com

Offered in immaculate condition, this lovely one bedroom apartment has been recently refurbished throughout. Set over the top floor of a lovely period building, the apartment comprises of a bright and spacious reception room, fully fitted kitchen, large double bedroom and family bathroom. The property benefits from a large amount of storage and a west facing aspect.

Balcombe Street is situated on quiet residential street, close to the open spaces of Regent's Park and both Marylebone and Baker Street Tube Stations. EPC RATING: C

Energy Efficiency Rating:

Agents Note: Whilst every care has been taken to prepare these particulars, they are for guidance purposes only. All measurements are approximate and are for general guidance purposes only and whilst every care has been taken to ensure their accuracy, they should not be relied upon and potential buyers/tenants are advised to recheck the measurements.

<http://www.newingtonstates.com>