



NEWINGTON
LONDON

4 Bedrooms

Apartment

Located in London

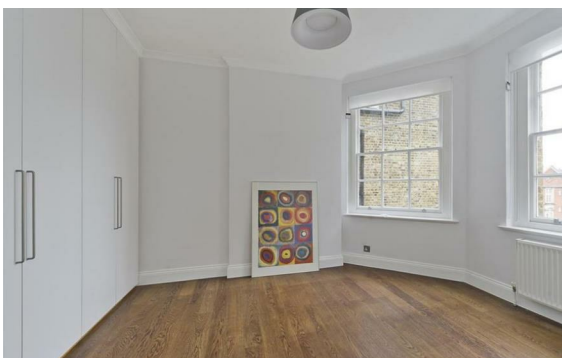
£1,215 Per Month



info@newingtonstates.com

<http://www.newingtonstates.com>

020 7724 2233



NEWINGTON

LONDON

60 Upper Montagu Street

London

W1H 1SN

020 7724 2233

info@newingtonstates.com

Newington Estates are delighted to present you this spacious four double bedroom apartment within a highly sought-after, portered block in Marylebone. The property has been finished to an exceptional standard through out. Situated on the fourth floor with a lift, the apartment comprises a bright and spacious reception room, four double bedrooms with one en-suite bathroom, separate fully fitted kitchen and further family bathroom.

The property is located just west of Regents Park offering convenient access to Oxford Street, West End & St John's Wood. Baker Street Station is located just minutes from the property. The shops of Oxford Street are within walking distance. EPC RATING: C

Energy Efficiency Rating:

Agents Note: Whilst every care has been taken to prepare these particulars, they are for guidance purposes only. All measurements are approximate and are for general guidance purposes only and whilst every care has been taken to ensure their accuracy, they should not be relied upon and potential buyers/tenants are advised to recheck the measurements.

<http://www.newingtonestates.com>