



NEWINGTON
LONDON

1 Bedrooms

Apartment

Located in London

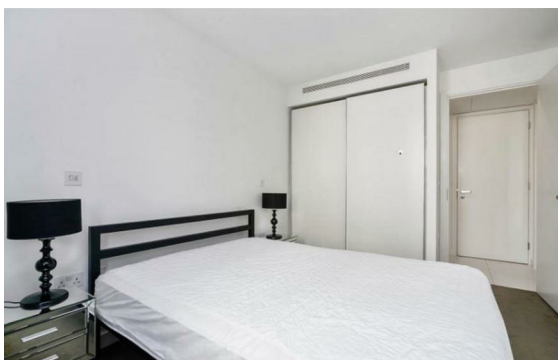
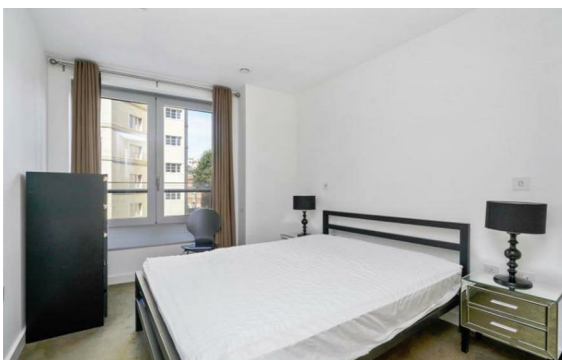
£680 Per Month



info@newingtonstates.com

<http://www.newingtonstates.com>

020 7724 2233



NEWINGTON LONDON

60 Upper Montagu Street

London

W1H 1SN

020 7724 2233

info@newingtonstates.com

A superb, open-plan one bedroom apartment located in a sought-after portered building near Great Portland Street Station. The apartment offers generous living space, underfloor heating and floor to ceiling windows with plenty of light. The bedroom is a double with ample storage, a fully fitted kitchen and modern bathroom.

Ideal location just moments away from Regent's Park, 3 underground stations - Great Portland Street, Warren Street and Euston Square Station. EPC RATING: B

Energy Efficiency Rating:

Agents Note: Whilst every care has been taken to prepare these particulars, they are for guidance purposes only. All measurements are approximate and are for general guidance purposes only and whilst every care has been taken to ensure their accuracy, they should not be relied upon and potential buyers/tenants are advised to recheck the measurements.

<http://www.newingtonstates.com>