



NEWINGTON
LONDON

4 Bedrooms

Apartment

Located in London

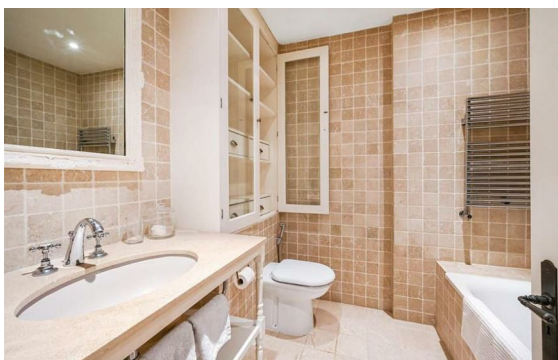
£1,400 Per Month



info@newingtonstates.com

<http://www.newingtonstates.com>

020 7724 2233



NEWINGTON LONDON

60 Upper Montagu Street

London

W1H 1SN

020 7724 2233

info@newingtonstates.com

Newington Estates are delighted to present you this stunning, newly refurbished four/five double bedroom apartment located in the heart of Marylebone in the Red-brick Mansion block. The apartment offers a bright and contemporary living space with plenty of built in storage.

Hyde Park Mansions is well located, just a short walk away from Edgware Road tube and Marylebone station and within close proximity to Marble Arch and Hyde Park. EPC RATING C

Energy Efficiency Rating:

Agents Note: Whilst every care has been taken to prepare these particulars, they are for guidance purposes only. All measurements are approximate and are for general guidance purposes only and whilst every care has been taken to ensure their accuracy, they should not be relied upon and potential buyers/tenants are advised to recheck the measurements.

<http://www.newingtonestates.com>