



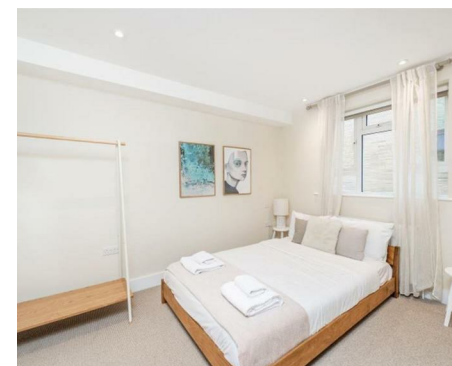
NEWINGTON
LONDON

1 Bedrooms

Apartment

Located in London

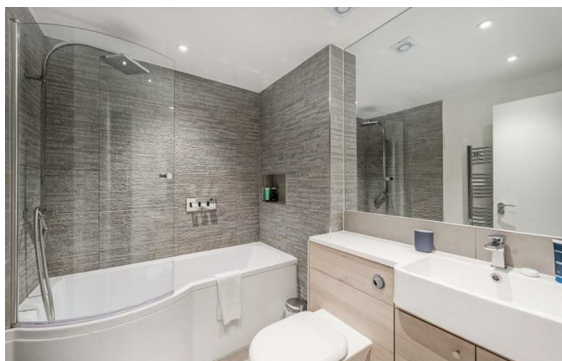
£600 Per Month



info@newingtonstates.com

<http://www.newingtonstates.com>

020 7724 2233



Newington Estates are delighted to present you this stunning bright one bedroom apartment in central Fitzrovia and just a short walk to the local cafes, restaurants and shops. With a modern kitchen and dining area, a good size double bedroom and a lovely bathroom with a stand alone bath.

Situated conveniently from a wide selection of shops, bars and restaurants of Charlotte Street and Goodge Street, the property is conveniently located for Goodge Street and Warren Street underground stations. The property is also within a walking distance to Marylebone Village, beautiful Regents Park, UCL University and hospital Oxford Street, Euston Square, Covent Garden, Mayfair and Bloomsbury. EPC RATING: D

Energy Efficiency Rating:

Agents Note: Whilst every care has been taken to prepare these particulars, they are for guidance purposes only. All measurements are approximate and are for general guidance purposes only and whilst every care has been taken to ensure their accuracy, they should not be relied upon and potential buyers/tenants are advised to recheck the measurements.

NEWINGTON

LONDON

60 Upper Montagu Street

London

W1H 1SN

020 7724 2233

info@newingtonestates.com

<http://www.newingtonestates.com>