



NEWINGTON
LONDON

2 Bedrooms

Apartment

Located in

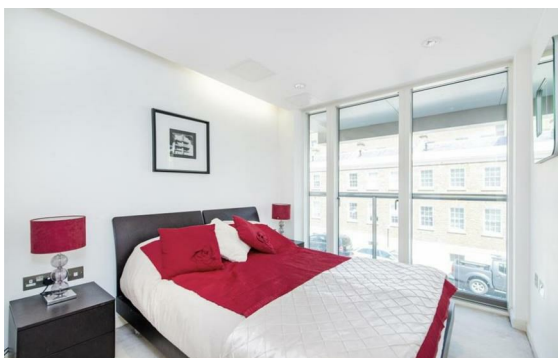
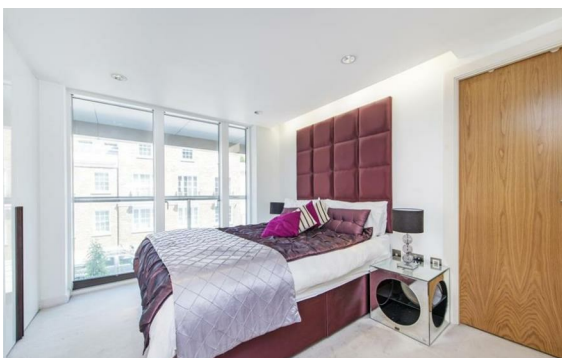
£1,800 Per Week



info@newingtonstates.com

<http://www.newingtonstates.com>

020 7724 2233



NEWINGTON LONDON

60 Upper Montagu Street

London

W1H 1SN

020 7724 2233

info@newingtonstates.com

****3 MONTH SHORT TERM****

Newington Estates are delighted to present you this beautiful two bedroom apartment located in a popular building with concierge services. The property offers a superb living space in a sought after residential development moments from Regent's Park and a wide selection of world class amenities.

The property comprises a spacious reception and dining area, a fully integrated kitchen, a master double bedroom with an en-suite bathroom, a second bedroom and a separate family bathroom. The flat is ideally located moments away from Baker Street Underground Station and Marylebone Station. EPC RATING: B

Energy Efficiency Rating:

Agents Note: Whilst every care has been taken to prepare these particulars, they are for guidance purposes only. All measurements are approximate and are for general guidance purposes only and whilst every care has been taken to ensure their accuracy, they should not be relied upon and potential buyers/tenants are advised to recheck the measurements.

<http://www.newingtonestates.com>