



NEWINGTON
LONDON

1 Bedrooms

Apartment

Located

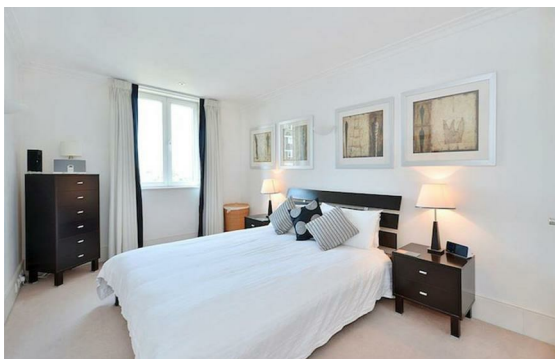
in Marble Arch
£740 Per Week



info@newingtonstates.com

<http://www.newingtonstates.com>

020 7724 2233



NEWINGTON LONDON

60 Upper Montagu Street

London

W1H 1SN

020 7724 2233

info@newingtonstates.com

A well presented newly refurbished one bedroom apartment located on the first floor (w/lift) of this sought after secure portered development. The property has good sized bedroom with ample storage, a modern bathroom, a fully fitted kitchen and a spacious living room. The property also benefits from a 24 hour concierge, private leisure facilities such as Gym, Sauna, and a lift to all floors.

Palgrave Gardens is a sought after address ideally located in Marylebone a short walk to Baker Street and the open spaces of Regents Park together with the shops and transport links of the West End. Baker Street Tube (Jubilee, Bakerloo, Hammersmith & City & Circle Lines) and Marylebone Station are both within easy walking distance as are the boutiques and restaurants of St John's Wood High Street. EPC RATING: B

Energy Efficiency Rating:

Agents Note: Whilst every care has been taken to prepare these particulars, they are for guidance purposes only. All measurements are approximate and are for general guidance purposes only and whilst every care has been taken to ensure their accuracy, they should not be relied upon and potential buyers/tenants are advised to recheck the measurements.

<http://www.newingtonstates.com>