



NEWINGTON
LONDON

2 Bedrooms

Apartment

Located in London

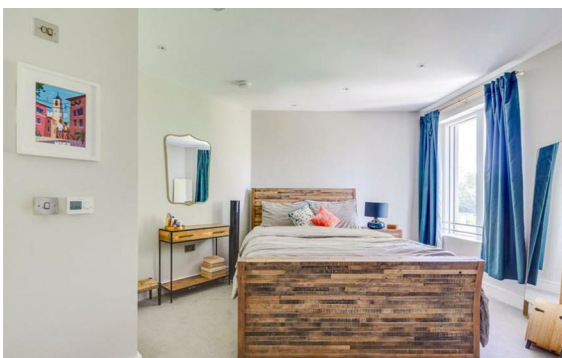
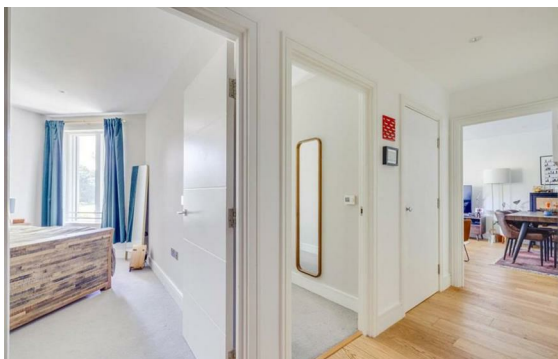
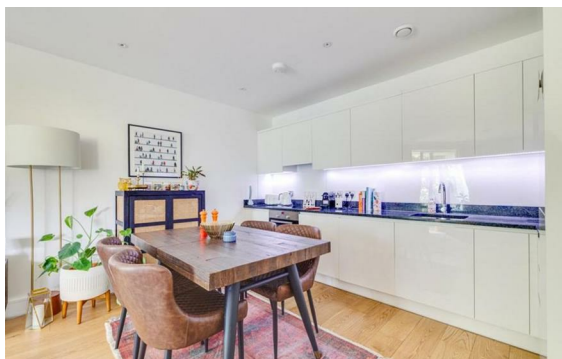
£810 Per Month



info@newingtonstates.com

<http://www.newingtonstates.com>

020 7724 2233



NEWINGTON

LONDON

60 Upper Montagu Street

London

W1H 1SN

020 7724 2233

info@newingtonstates.com

This first floor two double bedroom apartment is set within central Marylebone moments from the Baker Street High Street. The apartment comprises of two double bedrooms with ample storage, a bright and spacious reception area, a modern bathroom, and an open plan kitchen area which benefits from wooden flooring to the hallway and reception area.

The property is located a stone throw away away from the popular Marylebone High Street & Baker Street, which features an array of shops, restaurants and boutiques. Also close to excellent transport links at Baker Street and Marylebone. The open green spaces of Regent's Park and Hyde Park are close by. EPC RATING: C

Energy Efficiency Rating:

Agents Note: Whilst every care has been taken to prepare these particulars, they are for guidance purposes only. All measurements are approximate and are for general guidance purposes only and whilst every care has been taken to ensure their accuracy, they should not be relied upon and potential buyers/tenants are advised to recheck the measurements.

<http://www.newingtonstates.com>