



NEWINGTON  
LONDON

4 Bedrooms

Apartment

Located in London

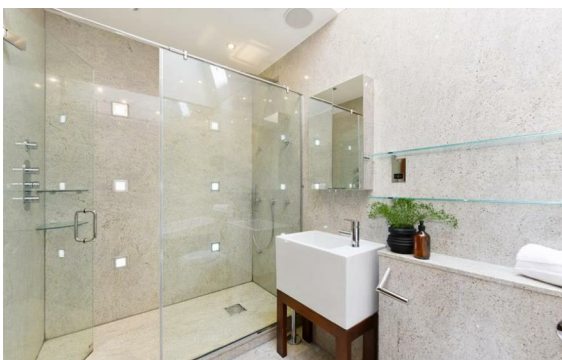
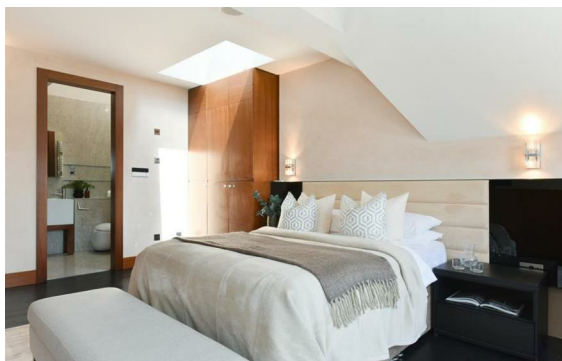
£1,380 Per Month



[info@newingtonstates.com](mailto:info@newingtonstates.com)

<http://www.newingtonstates.com>

020 7724 2233



# NEWINGTON LONDON

60 Upper Montagu Street

London

W1H 1SN

020 7724 2233

[info@newingtonstates.com](mailto:info@newingtonstates.com)

Newington Estates are pleased to present this spectacular four bedroom apartment situated in the wonderful area of St John's Wood moments away from Swiss Cottage Station. This light filled, exceptional air conditioned apartment features four bedrooms, two/three bathrooms, a large reception room with a dining area & a fully integrated, modern kitchen. The apartment features beautiful interior design & comes with double glazed windows, alarm & video entry-phone, with fantastic views of London.

St Johns Wood Park is located within easy reach of the amenities and transport links of Swiss Cottage and St John's Wood.

## Energy Efficiency Rating: C

Agents Note: Whilst every care has been taken to prepare these particulars, they are for guidance purposes only. All measurements are approximate and are for general guidance purposes only and whilst every care has been taken to ensure their accuracy, they should not be relied upon and potential buyers/tenants are advised to recheck the measurements.

<http://www.newingtonestates.com>