



NEWINGTON  
LONDON

3 Bedrooms

Apartment

Located in London

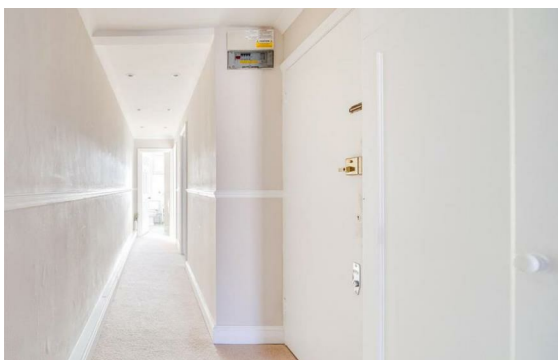
£985 Per Month



[info@newingtonstates.com](mailto:info@newingtonstates.com)

<http://www.newingtonstates.com>

020 7724 2233



# NEWINGTON

## LONDON

60 Upper Montagu Street

London

W1H 1SN

020 7724 2233

[info@newingtonstates.com](mailto:info@newingtonstates.com)

Newington Estates are delighted to present you this newly refurbished three bedroom apartment located on Hamilton Terrace. The property comprises three double bedrooms, two bathrooms (one en-suite), bright & spacious double reception room with a fully fitted separate kitchen, a private balcony and separate utility room.

Further benefits include high ceilings, ample storage and plenty of natural light. Hamilton Terrace is situated close to St John's Wood High Street, St John's Wood Underground Station (Jubilee Line), Elgin Avenue and Clifton Road. EPC RATING: D

### Energy Efficiency Rating:

Agents Note: Whilst every care has been taken to prepare these particulars, they are for guidance purposes only. All measurements are approximate and are for general guidance purposes only and whilst every care has been taken to ensure their accuracy, they should not be relied upon and potential buyers/tenants are advised to recheck the measurements.

<http://www.newingtonestates.com>