



WATERLINKS BOULEVARD



PRIME BOX

Proposed Unit

Ground Floor

Warehouse; 3,246 m² GEA (34,940 ft²)
Office; 321 m² GEA (3,455 ft²)

First Floor

Office; 346 m² GEA (3,724 ft²)



**Prime Point,
Aston**

Client: Prime Box Ltd
Date: 26/01/24
Job/Dwg: 19168-V007B-Proposed Site Plan
Scale 1:500@A3

THE HARRIS PARTNERSHIP
ARCHITECTS
2 St. Johns North,
Wakefield, WF1 3QA
T: 01924 291 800
F: 01924 290 072
www.harrispartnership.com





PRIME BOX

Proposed Unit





Ground Floor

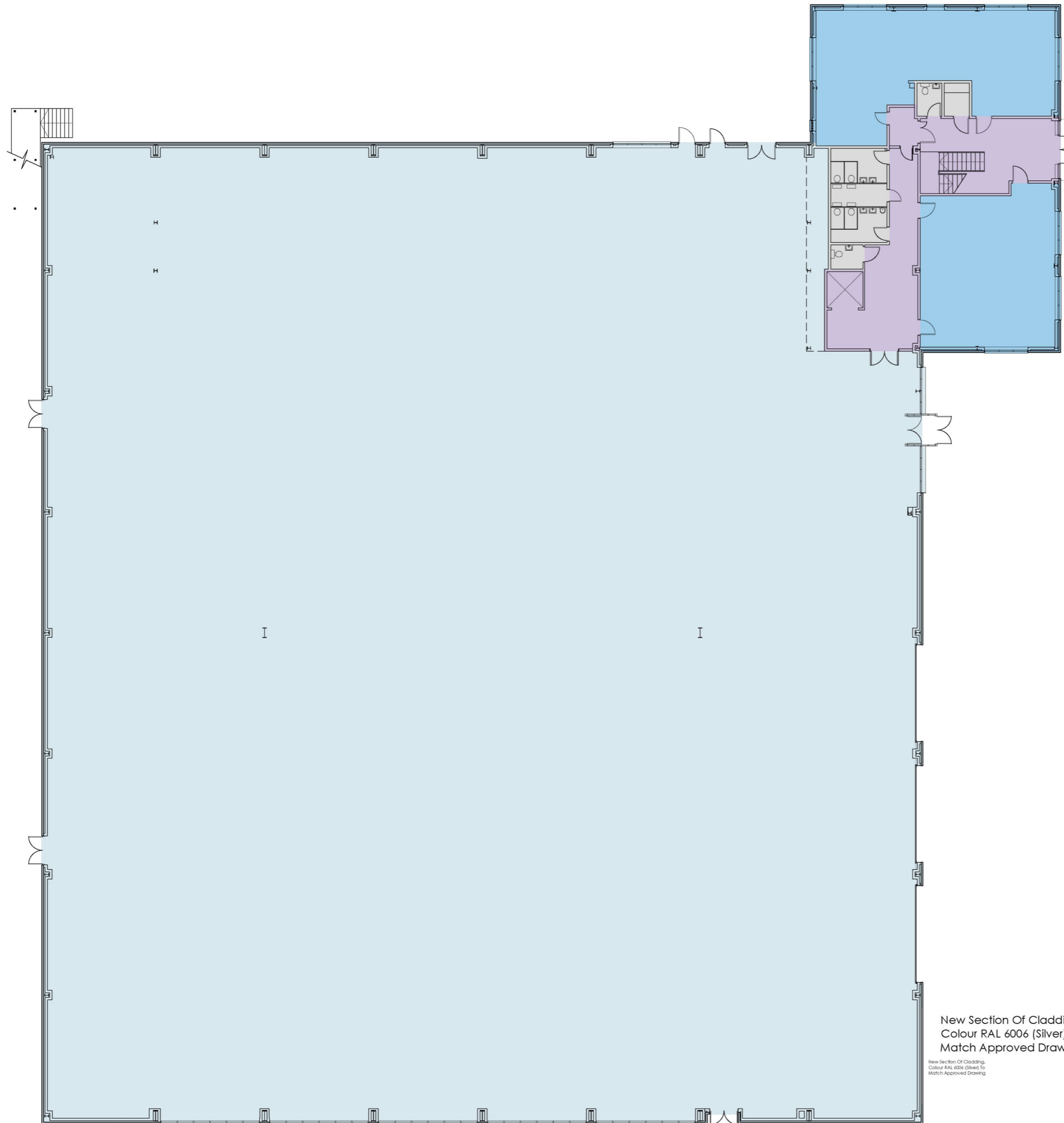
Warehouse; 3,246 m² GEA (34,940 ft²)
Office; 321 m² GEA (3,455 ft²)

First Floor

Office; 346 m² GEA (3,724 ft²)

Ground Floor Plan

-  Circulation/Break Out Areas
-  Meeting Rooms/Private Offices
-  Open Offices
-  Ancillary Spaces/Toilets



New Section Of Cladding.
Colour RAL 6006 (Silver) To
Match Approved Drawing

New Section Of Cladding.
Colour RAL 6006 (Silver) To
Match Approved Drawing

**Prime Point,
Aston**

Client: Prime Box Ltd
Date: 26/01/24
Job/Dwg: 19168-V008A-Proposed GF Plan
Scale 1:250@A3

THE HARRIS PARTNERSHIP
ARCHITECTS

2 St Johns North,
Wakefield, WF1 3QA
T: 01924 291 800
F: 01924 290 072

www.harrispartnership.com





PRIME BOX

Proposed Unit





Ground Floor

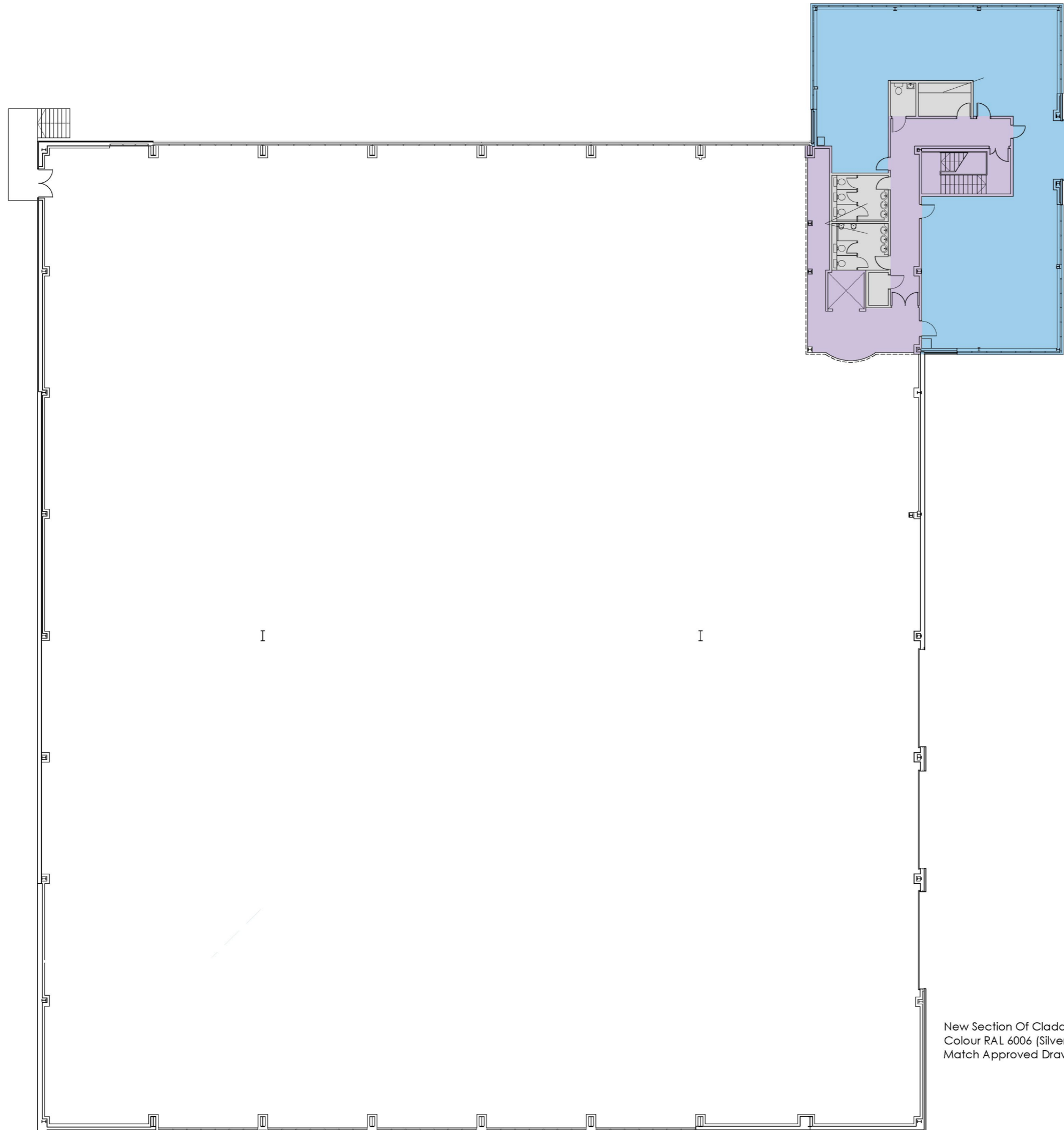
Warehouse; 3,246 m² GEA (34,940 ft²)
Office; 321 m² GEA (3,455 ft²)

First Floor

Office; 346 m² GEA (3,724 ft²)

First Floor Plan

-  Circulation/Break Out Areas
-  Meeting Rooms/Private Offices
-  Open Offices
-  Ancillary Spaces/Toilets



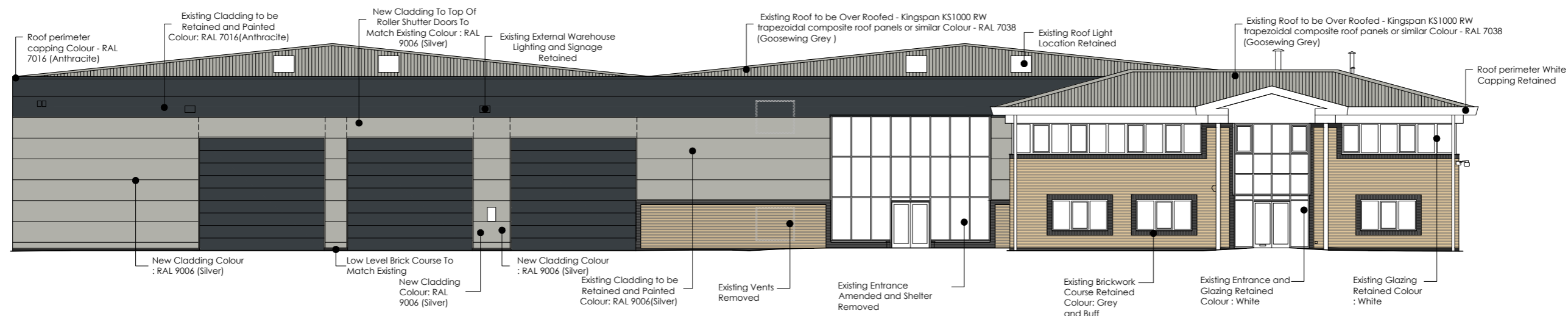
New Section Of Cladding.
Colour RAL 6006 (Silver) To
Match Approved Drawing

**Prime Point,
Aston**

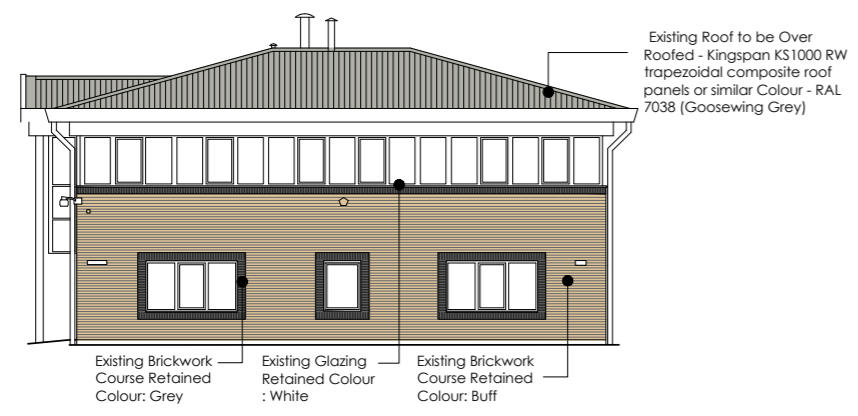
Client: Prime Box Ltd
Date: 26/01/24
Job/Dwg: 19168-V009A-Proposed FF Plan
Scale 1:250@A3

THE HARRIS PARTNERSHIP
ARCHITECTS
2 St Johns North,
Wakefield, WF1 3QA
T: 01924 291 800
F: 01924 290 072
www.harrispartnership.com

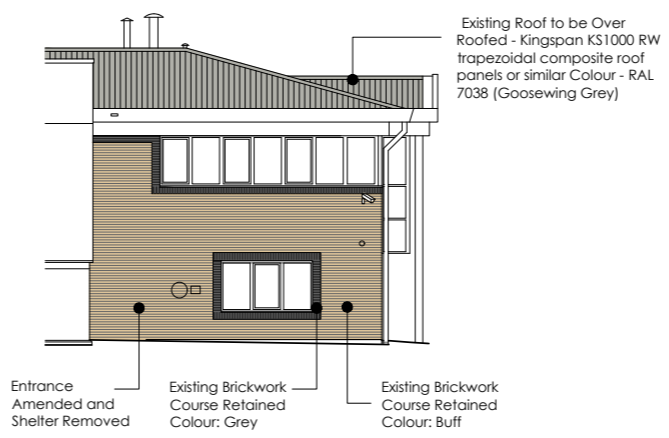




ELEVATION A



ELEVATION B



ELEVATION C

Prime Point, Aston

Client: Prime Box Ltd
 Date: 26/01/24
 Job/Dwg: 19168-V115-Proposed Elevations
 NTS@A3

THE HARRIS PARTNERSHIP
 ARCHITECTS

2 St. Johns North,
 Wakefield, WF1 3QA
 T: 01924 291 800
 F: 01924 290 072

www.harrispartnership.com

