



JF

Jonathan|Fitzpatrick
VILLAGE & COUNTRY HOMES

59 Highfields Drive Bilsthorpe NG22 8SN

£199,950 Freehold

Tel 01623 392676
Email mail@jfea.co.uk
Visit jfea.co.uk



Make immediate arrangements to view this spacious 3 double bedroom detached chalet bungalow situated in a quiet location and backing onto fields at the rear. The property comprises entrance hallway, large front to back living room, ground floor double bedroom and shower room plus rear conservatory and dining kitchen. The first floor comprises two further double bedrooms. Outside there is driveway parking leading to a sizeable car port plus large timber store in the west facing rear garden. Offered for sale at a competitive asking price to reflect modernisation required - no onward chain. Viewing highly recommended.

Asking price : £199,950 Freehold

Council tax band B

Flood Risk : Very Low

Gas central heating / double glazing / all mains services

Viewing by appointment through

Jonathan Fitzpatrick Village & Country Homes

64 Main Street Farnsfield NG22 8EF

Telephone 01623 392676

Email : mail@jfea.co.uk

Web : jfea.co.uk





59 Highfields Drive, Bilsthorpe, Newark, NG22 8SN

Approximate Gross Internal Area
1313 sq ft - 122 sq m
(Including Carport)

Energy performance certificate (EPC)

59 Highfields Drive
Bilsthorpe
NEWARK
NG22 8SN

Energy rating

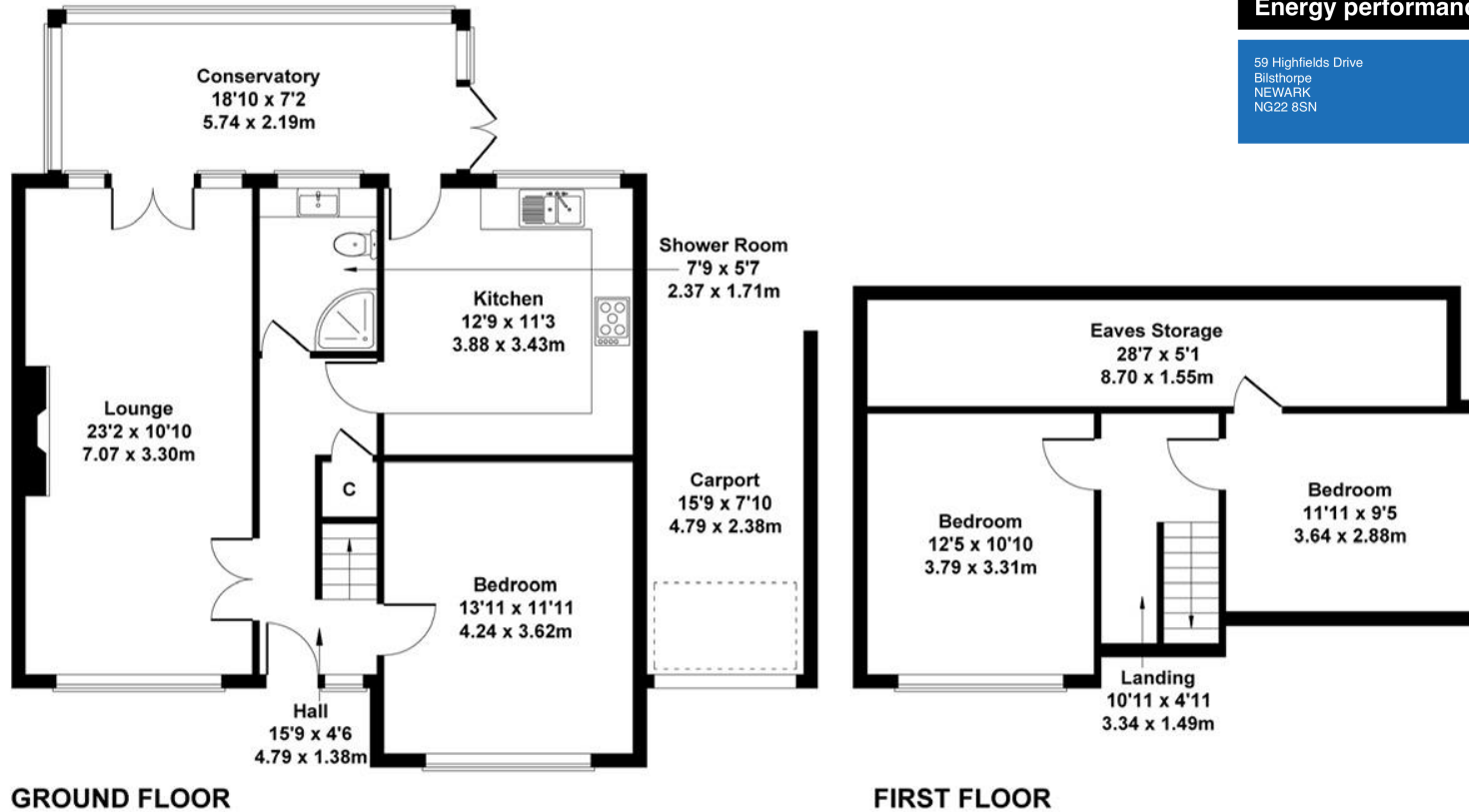
C

Valid until:

19 August 2032

Certificate number:

2532-1528-3100-0280-9226



Not to Scale. Produced by The Plan Portal 2024
For Illustrative Purposes Only.