



Jonathan|Fitzpatrick
VILLAGE & COUNTRY HOMES



'Vine Cottage' Quaker Lane Farnsfield Newark NG22 8EE

£625,000 Freehold

Tel 01623 392676
Email mail@jfea.co.uk
Visit jfea.co.uk

Situated on an outstanding mature plot in the much sought-after south side of Quaker Lane, this beautifully presented 3 bedroom, 4 reception room Georgian detached property seamlessly blends period charm and modern living with a touch of luxury.

Extended and comprehensively modernised by the current owners, the property offers a stylish and well-appointed interior while retaining its character features - think exposed beams, sash-style windows, and timeless finishes throughout. Highlights include a superb split level lounge/sitting room, separate dining room, high quality conservatory, recently re-fitted kitchen and utility room, brand new bathroom with shower and downstairs cloakroom - all finished to an exceptional standard.

Outside, the large landscaped garden offers a private and tranquil retreat, perfect for entertaining or relaxing in peace. With a full width patio, mature planting and thoughtfully designed spaces, it's a true highlight of this stunning home. All of this just a short stroll from the heart of Farnsfield, with its independent shops, cafes, and numerous village amenities (and catchment for Southwell Minster school) plus beautiful countryside walks close by. Viewing strongly recommended.















Asking price : £625,000 Freehold

Council tax band E

Flood Risk : Low

Gas central heating

Double glazing

All main services

Viewing by appointment through

Jonathan Fitzpatrick Village & Country Homes

64 Main Street Farnsfield NG22 8EF

Telephone 01623 392676

Email : mail@jfea.co.uk

Web : jfea.co.uk

Energy performance certificate (EPC)

Vine Cottage
Quaker Lane
Farnsfield
NEWARK
NG22 8EE

Energy rating

D

Valid until:

2 April 2035

Certificate number:

0300-2202-2440-2705-4825

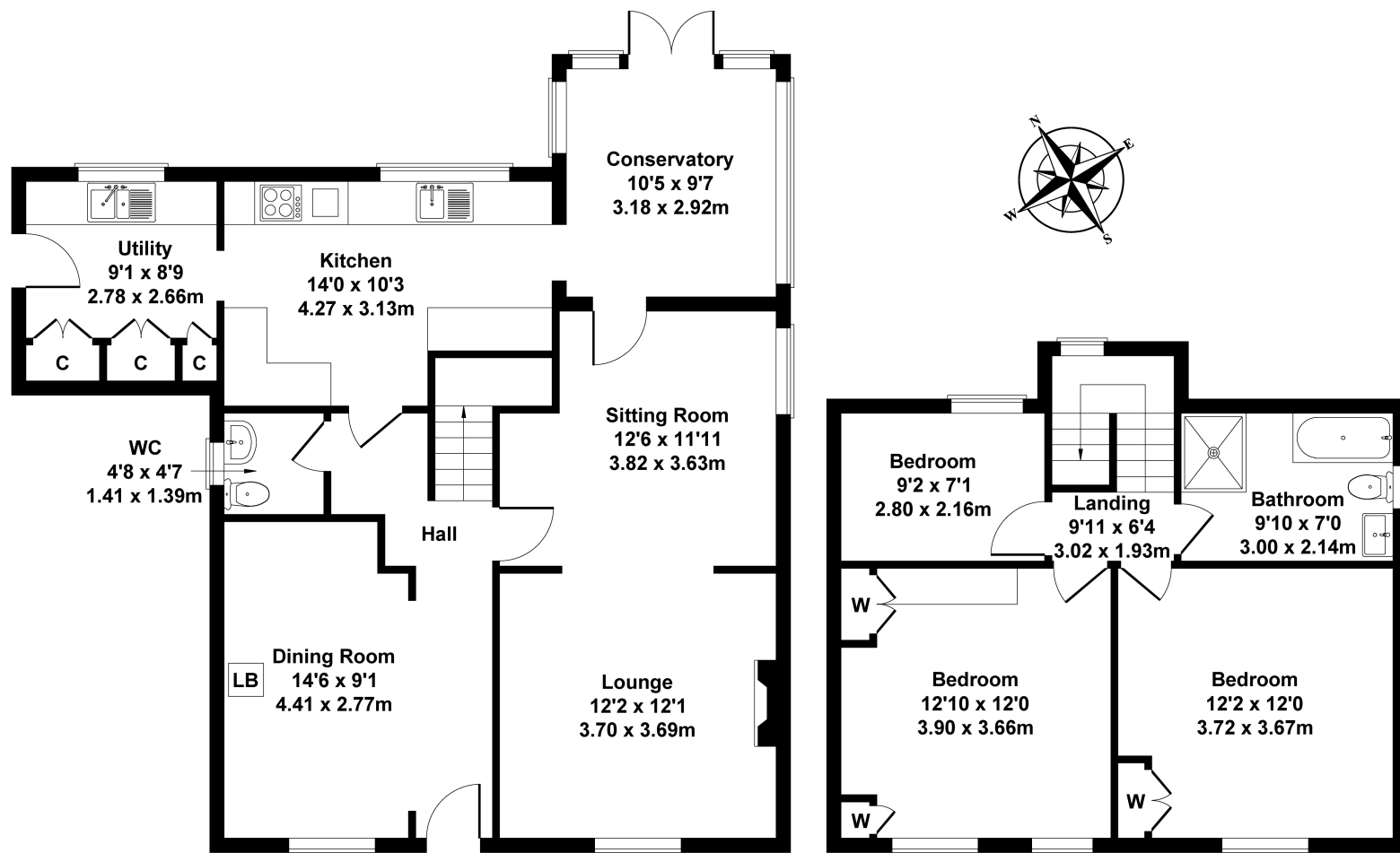


Jonathan|Fitzpatrick

VILLAGE & COUNTRY HOMES

Vine Cottage, Quaker Lane, Farnsfield, NG22 8EE

Approximate Gross Internal Area
1399 sq ft - 130 sq m



GROUND FLOOR

FIRST FLOOR

Not to Scale. Produced by The Plan Portal 2025
For Illustrative Purposes Only.

Agents Note: Whilst every care has been taken to prepare these sales particulars, they are for guidance purposes only. All measurements are approximate are for general guidance purposes only and whilst every care has been taken to ensure their accuracy, they should not be relied upon and potential buyers are advised to recheck the measurements