



Jonathan Fitzpatrick
VILLAGE & COUNTRY HOMES

‘The Mill’ Main Street Bathley Newark NG23 6DJ

£439,950 Freehold

Tel 01623 392676
Email mail@jfea.co.uk
Visit jfea.co.uk



Embrace the Peace of Village Living in this Exceptional Period Conversion

Situated in an exclusive courtyard of just four individually crafted homes, this beautifully converted 3 bedroom, single-storey stable block offers a rare opportunity to experience the serenity and charm of rural village life—without compromising on style or comfort.

From the moment you step inside, the home exudes warmth and character, with vaulted ceilings, exposed beams, rich solid wood flooring, and rustic brickwork. The heart of the home is the elegant main reception room - a generous yet intimate space designed for relaxed evenings by the wood-burning stove or entertaining around the dining table. The adjoining farmhouse-style kitchen breakfast room is bathed in natural light from its southerly aspect, offering a peaceful setting for morning coffee or leisurely brunches, with French doors opening onto the private patio and garden. From the rear hallway lie three spacious bedrooms, all stylishly appointed with a newly fitted family shower room combining luxury with practicality. Outside, the landscaped garden is a tranquil haven - low-maintenance, yet lush, with natural screening that ensures peace and privacy. There's parking for two vehicles on the front driveway, while a generously sized garage/workshop nearby provides further space for storage, hobbies, or creative pursuits, with additional parking in front.

This is more than a home - it's a lifestyle. Nestled in a picturesque village setting with its traditional pub and beautiful countryside walks, this unique property offers the calm and community of countryside living, yet remains within easy reach of essential amenities. Properties of this calibre and location rarely come to market. *Viewing highly recommended at a new competitive asking price.*

Asking price £439,950 Freehold

Council tax band C

Flood risk - Low

Oil central heating

Double glazing / mains drainage

Viewing strictly by appointment through Jonathan Fitzpatrick Village & Country Homes

Tel 01623 392676

Email mail@jfea.co.uk











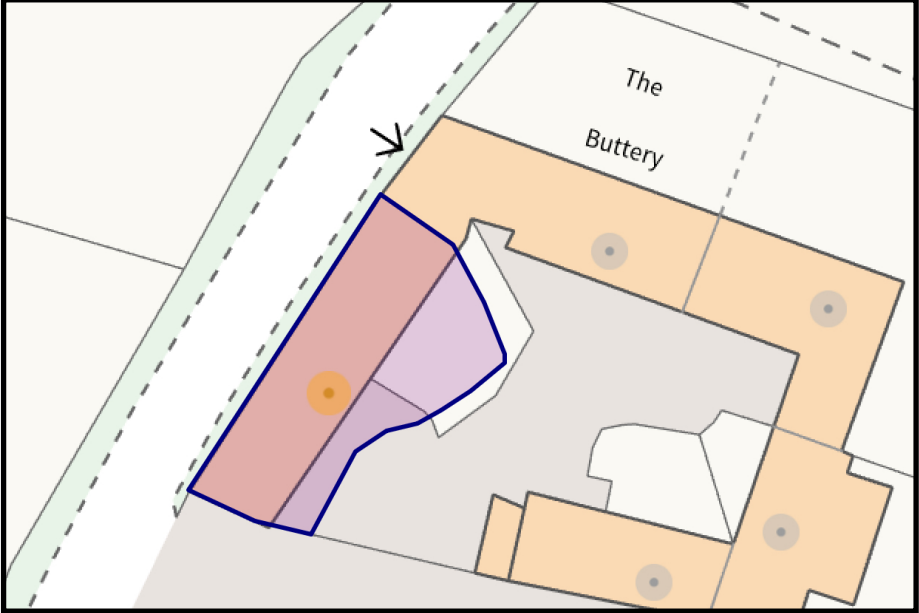










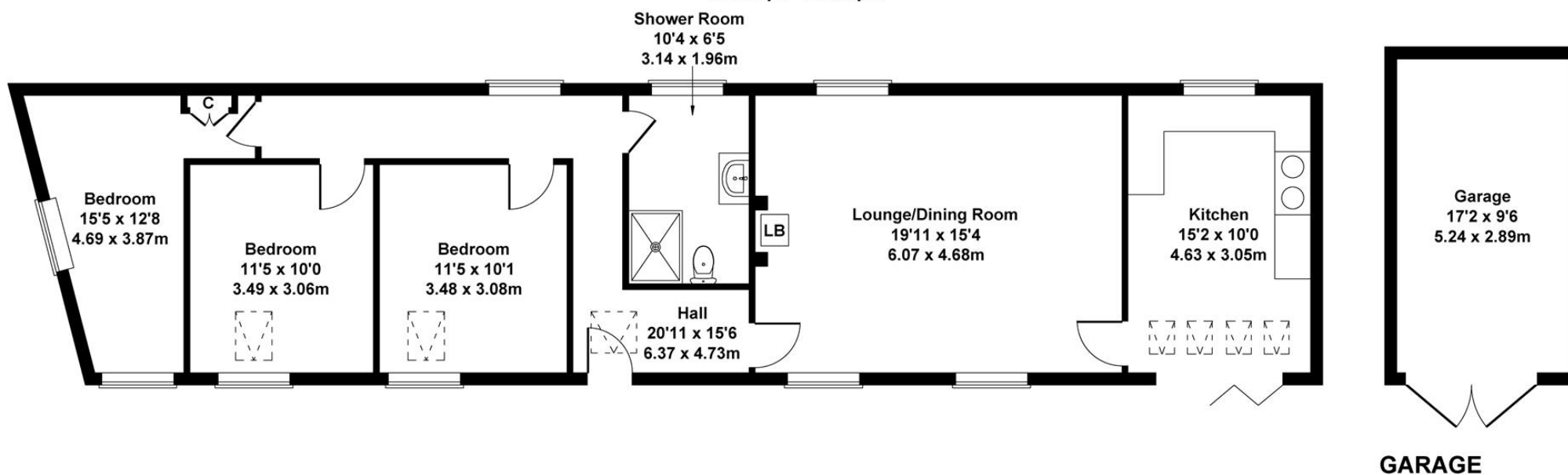






The Mill, Main Street, Bathley, Newark, NG23 6DJ

Approximate Gross Internal Area
1206 sq ft - 112 sq m



Not to Scale. Produced by The Plan Portal 2025
For Illustrative Purposes Only.

Energy performance certificate (EPC)

The Mill
Main Street
Bathley
NEWARK
NG23 6DJ

Energy rating
F

Valid until: 6 January 2035
Certificate number: 5635-0329-5400-0916-5202

Agents Note: Whilst every care has been taken to prepare these sales particulars, they are for guidance purposes only. All measurements are approximate are for general guidance purposes only and whilst every care has been taken to ensure their accuracy, they should not be relied upon and potential buyers are advised to recheck the measurements