



**JF**

Jonathan|Fitzpatrick  
VILLAGE & COUNTRY HOMES

22 Bechers Court The Burgage Southwell NG25 0FX

£550,000 Freehold

Tel 01623 392676  
Email [mail@jfea.co.uk](mailto:mail@jfea.co.uk)  
Visit [jfea.co.uk](http://jfea.co.uk)



**B**echers Court is an award winning development of luxury homes (built in 2018) situated in this prestigious heritage site, close to Southwell's independent boutique shops, cafes and numerous amenities. We are delighted to offer this extremely well appointed 3 bedroom, three storey town house, offered for sale in immaculate order throughout and benefitting from driveway parking, single garage, south facing rear garden and large balcony off the living room. The property offers extremely adaptable accommodation, with ground floor bedroom (or study) and shower room, open plan kitchen (with built in appliances), dining / living room to the first floor and second floor principal bedroom with en suite shower room and separate family bathroom. The property features high quality finishes throughout, with floor to ceiling windows to the main living areas providing an abundance of natural light with views towards the historic town centre. Viewing strongly recommended.

*Southwell is a charming north Nottinghamshire market town, well known for its historical significance, picturesque surroundings, and excellent shopping facilities. The town's local events, markets, and festivals contribute to its vibrant community spirit and essential services like schools, healthcare facilities, and transportation options are all close by.*





**Asking price : £550,000 Freehold**

Council tax band C

Flood Risk : Low

Gas central heating / mains drainage

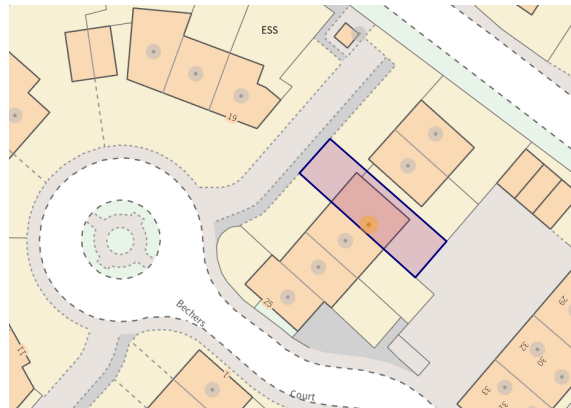
Newark Northgate railway station  
(to London Kings Cross) approx. 8.5 miles

Viewing by appointment through  
Jonathan Fitzpatrick Village & Country Homes  
64 Main Street Farnsfield NG22 8EF

Telephone 01623 392676

Email : [mail@jfea.co.uk](mailto:mail@jfea.co.uk)

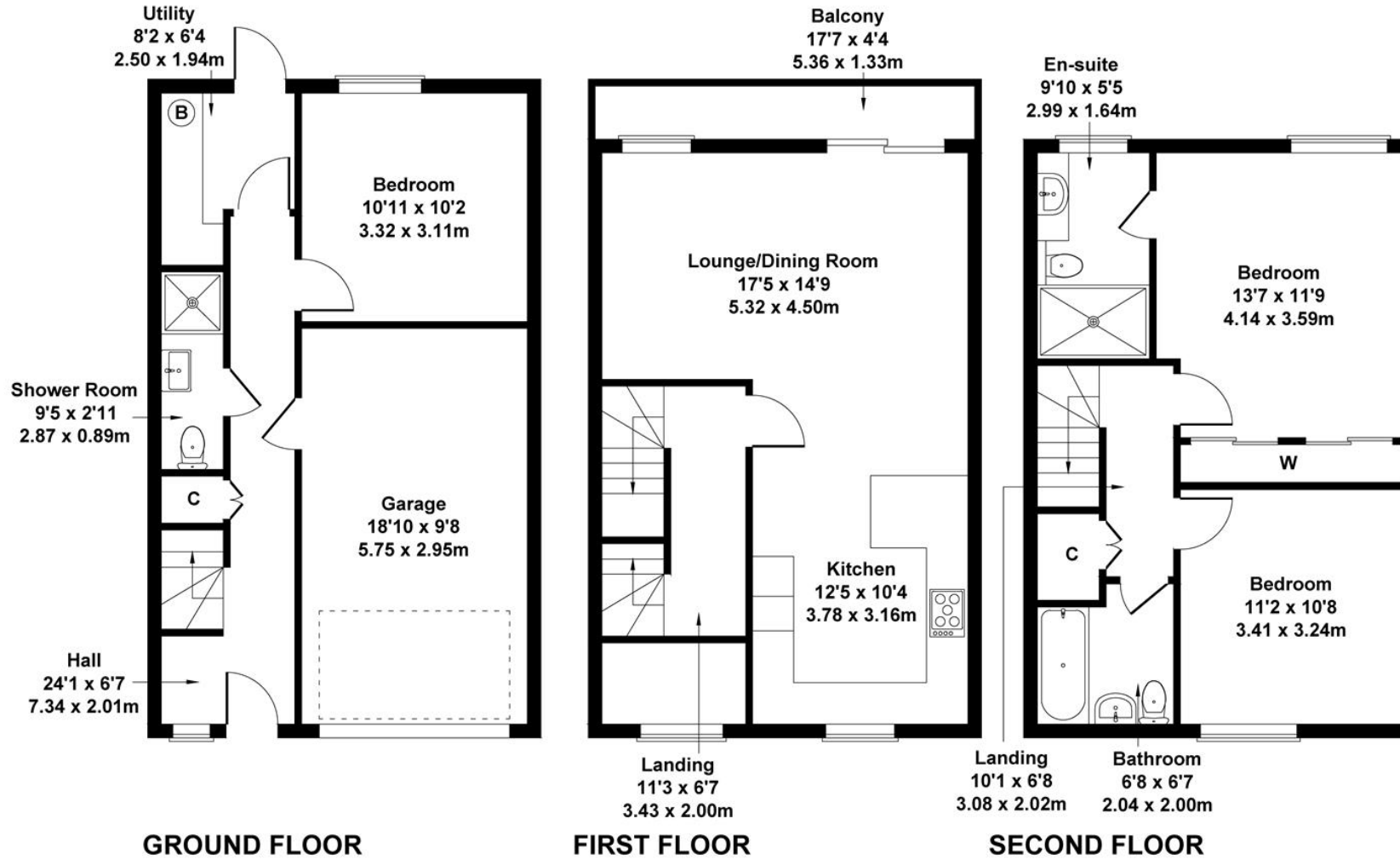
Web : [jfea.co.uk](http://jfea.co.uk)



# 22 Bechers Court, Southwell, NG25 0FX

Approximate Gross Internal Area  
1475 sq ft - 137 sq m

22 Bechers Court Burgage SOUTHWELL NG25 0FX	Energy rating	Valid until: 13 June 2028
	<b>B</b>	Certificate number: 9748-1097-7306-5188-5980



Not to Scale. Produced by The Plan Portal 2024  
For Illustrative Purposes Only.