



JF

Jonathan|Fitzpatrick
VILLAGE & COUNTRY HOMES

Flat 1 85 King Street Southwell NG25 0EH

Offers over £115,000 Leasehold

Tel 01623 392676
Email mail@jfea.co.uk
Visit jfea.co.uk



An affordable and well presented 1 bedroom ground floor apartment forming part of this charming grade 2 listed Georgian property, ideally located close to the busy and vibrant centre of Southwell with its numerous independent shops, cafes, pubs and cultural activities. The property is offered for sale with a long lease of approximately 960 years and is currently tenanted, making it an ideal investment opportunity (details available on request).

Southwell is a charming north Nottinghamshire market town, well known for its historical significance, picturesque surroundings, and excellent shopping facilities. The town's local events, markets, and festivals contribute to its vibrant community spirit and essential services like schools, healthcare facilities, and transportation options are all close by.

Asking price : offers over £115,000 Leasehold

Council tax band A

Flood Risk : Very Low

Electric heating / mains drainage

Newark Northgate railway station
(to London Kings Cross) approx. 8.5 miles

Viewing by appointment through
Jonathan Fitzpatrick Village & Country Homes
64 Main Street Farnsfield NG22 8EF

Telephone 01623 392676

Email : mail@jfea.co.uk

Web : jfea.co.uk

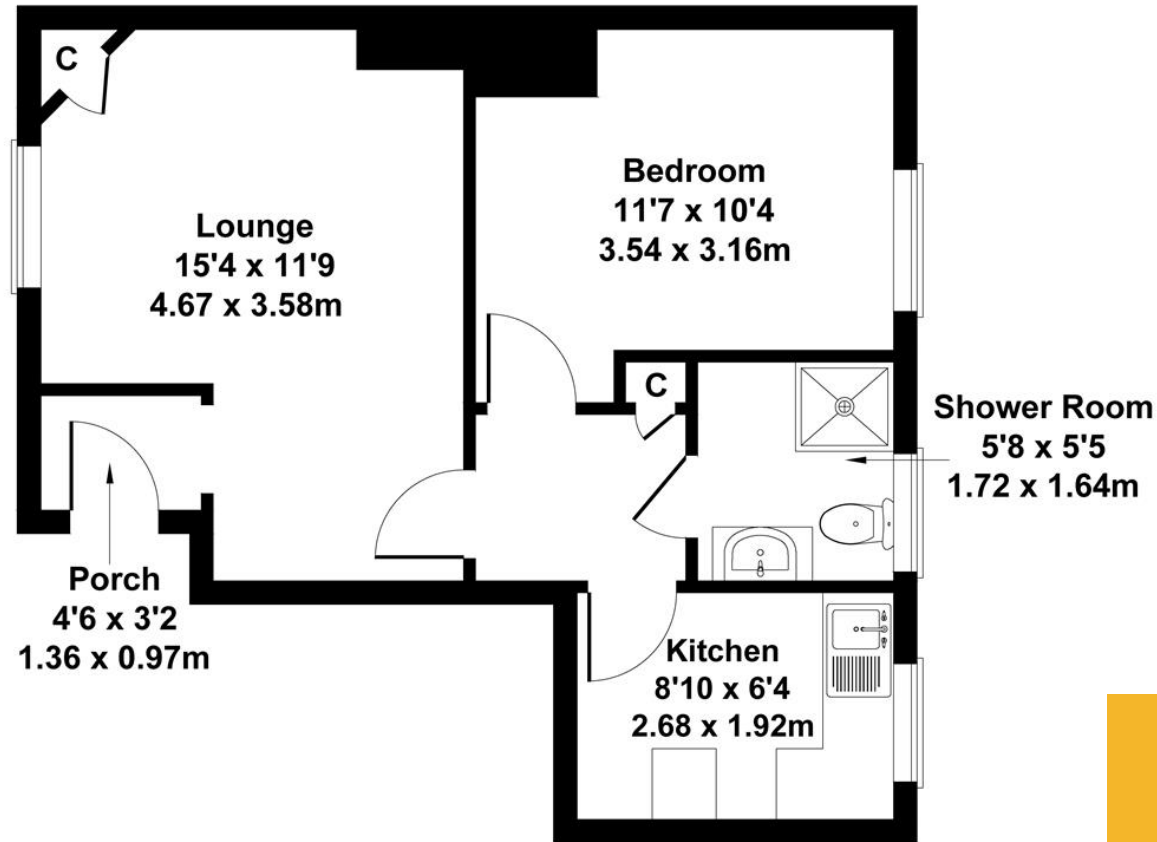


Energy performance certificate (EPC)

Flat 1 85 King Street SOUTHWELL NG25 0EH	Energy rating E	Valid until: 25 April 2034	Certificate number: 9434-2324-4300-0715- 7226
---	---------------------------	-------------------------------	--

Flat 1, 85 King Street, Southwell, NG25 0EH

Approximate Gross Internal Area
409 sq ft - 38 sq m



Not to Scale. Produced by The Plan Portal 2024
For Illustrative Purposes Only.

