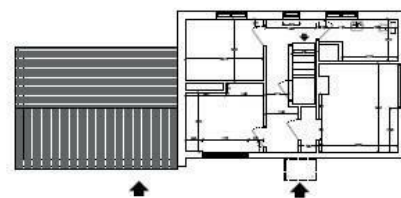




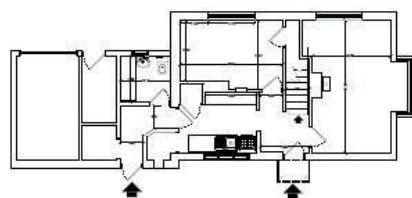
## 188 Westbrook, Bromham, Chippenham, Wiltshire, SN15 2ED

Asking Price £650,000

- Three Bedroom with Planning Permission to Create Five Bedroom Residence
- Rolling Countryside Views
- Detached House in Westbrook
- Large Garden
- Idyllic Countryside Setting



EXISTING FIRST FLOOR



EXISTING GROUND FLOOR

## Directions

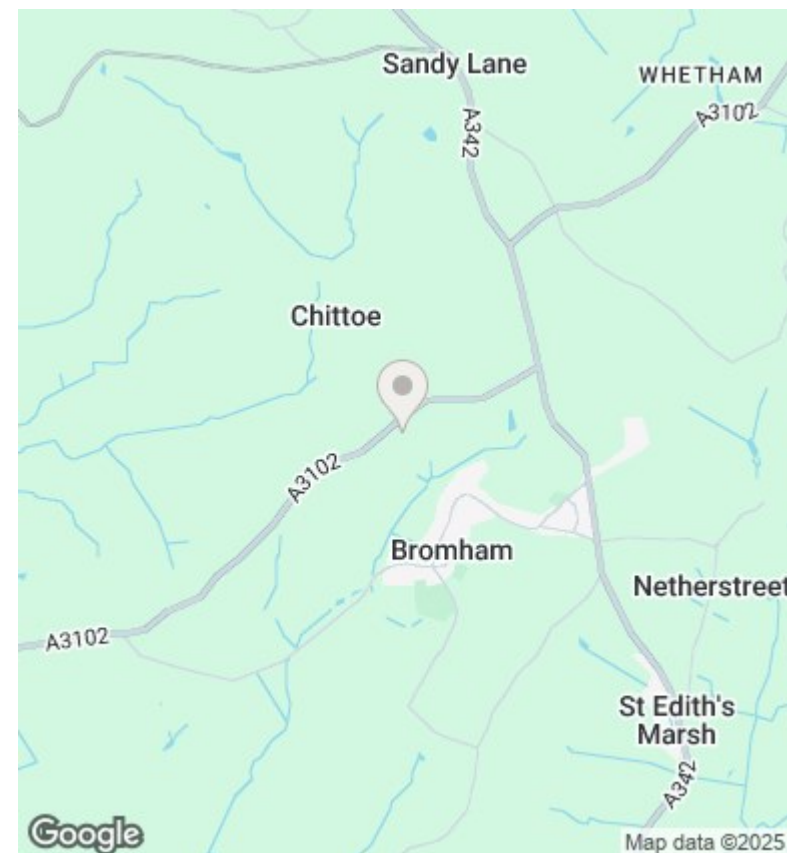
## Viewings

Viewings by arrangement only. Call 01249 466999 to make an appointment.

## Council Tax Band

E

## EPC Rating:



Energy Efficiency Rating		
	Current	Potential
Very energy efficient - lower running costs		
(92 plus) <b>A</b>		
(81-91) <b>B</b>		
(69-80) <b>C</b>		
(55-68) <b>D</b>		
(39-54) <b>E</b>		
(21-38) <b>F</b>		
(1-20) <b>G</b>		
Not energy efficient - higher running costs		
<b>England &amp; Wales</b>	EU Directive 2002/91/EC	