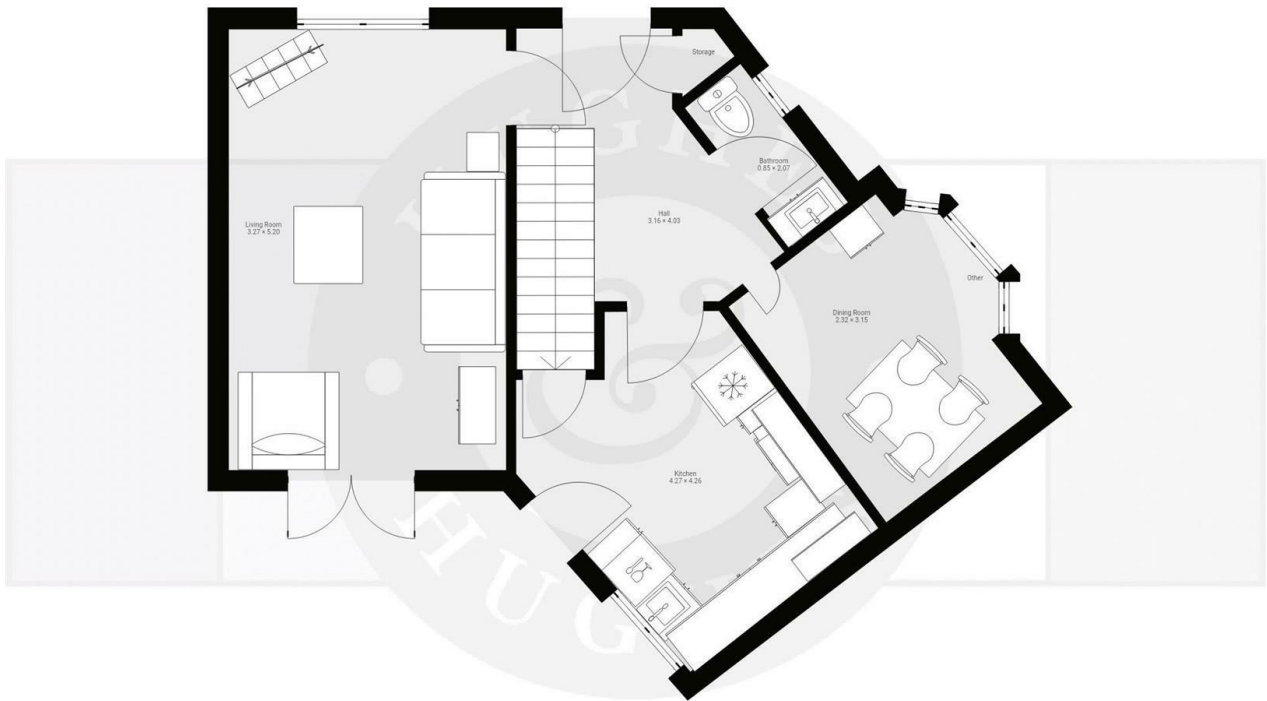




82 Rudman Park, Chippenham, Wiltshire, SN15 1NB

Asking Price £290,000

- Innovative use of space – A cleverly designed layout that enhances light, flow, and versatility
- Dual-aspect living room – Flooded with natural light, creating a bright and welcoming feel.
- Three generously sized bedrooms – Well-proportioned rooms, ideal for family living or home working.
- Allocated off street parking to rear of property
- Low-maintenance garden – Designed for effortless enjoyment, featuring patio and landscaped areas.
- Master bedroom with ensuite – A private retreat with its own shower room.



THIS FLOORPLAN IS PROVIDED WITHOUT WARRANTY OF ANY KIND. SENSOPIA DISCLAIMS ANY WARRANTY INCLUDING, WITHOUT LIMITATION, SATISFACTORY QUALITY OR ACCURACY OF DIMENSIONS.



Directions

Viewings

Viewings by arrangement only. Call 01249 466999 to make an appointment.

Council Tax Band

C

EPC Rating:

Energy Efficiency Rating		
	Current	Potential
Very energy efficient - lower running costs		
(92 plus) A		
(81-91) B		
(69-80) C		
(55-68) D		
(39-54) E		
(21-38) F		
(1-20) G		
Not energy efficient - higher running costs		
England & Wales	EU Directive 2002/91/EC	