



Offers in the region of
£285,000

At a glance...



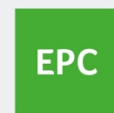
3



1



2



EPC

C



COUNCIL
TAX

D

**holland
& odam**

52 Sharpham Road
Glastonbury
Somerset
BA6 9GB

TO VIEW

30 High Street, Glastonbury,
Somerset BA6 9DX

01458 833123

glastonbury@hollandandodam.co.uk



Directions

From the town centre proceed up the High Street passing St John's Church on the left. At the top of the hill turn left into Wells Road and continue for approximately 1.5 miles and then turn left into Dunstan Park. Continue along Sharpham Road, where the property can be found on the right hand side.

Services

Mains electricity, gas, water and drainage are connected. Gas central heating system.

Local Authority

Somerset Council
0300 1232224
somerset.gov.uk

Tenure

Freehold
Management Charges £200 PA



Location

The property is situated on Dunstan Park close to countryside on the outskirts of the historic town of Glastonbury which is famous for its Tor and Abbey Ruins. The town centre offers a good range of shops, banks, restaurants, cafes, health centres, public houses and schooling. The Cathedral City of Wells is 6 miles whilst Street is 2.5 miles and offers more comprehensive facilities including both indoor and open air swimming pools, Strode Theatre, Strode College and the complex of shopping outlets and restaurants in Clarks Village. Access to the M5 motorway can be gained at Junction 23 (Dunball) some 14 miles distant. Bristol, Bath and Yeovil are all within commuting distance.

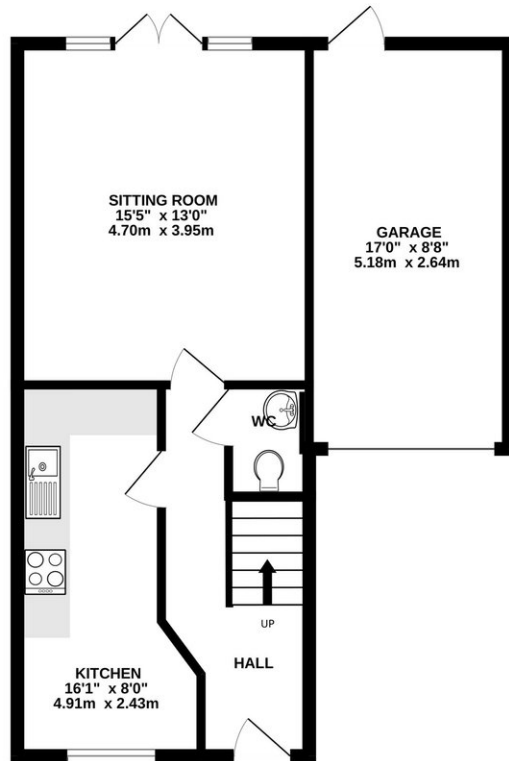
Insight

A superbly presented three bedroom town house situated within a quiet residential development on the fringes of Glastonbury. The accommodation is spread across three floors and offers a kitchen, lounge/diner and cloakroom, two bedrooms and a family bathroom on the first floor, and a master bedroom with ensuite shower room on the second floor. Outside there is a private enclosed garden, with single garage and driveway.

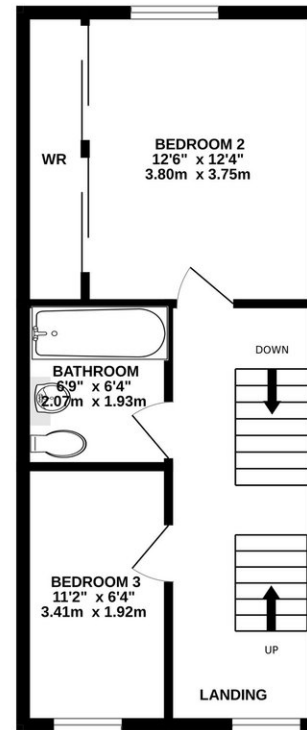
- Situated on the edge of the development with a lovely open outlook to the rear.
- A spacious entrance hall leads to stairs rise to the first floor, with door to the kitchen, sitting room/diner, and cloakroom.
- The kitchen has been fitted with a range of wall and base units with integrated Smeg electric induction hob and double oven, space and plumbing for appliances including a washing machine, dishwasher & fridge/freezer.
- Sitting room/diner is light and airy benefitting from double doors opening onto the landscaped garden.
- On the first floor there are two well proportioned bedrooms. Bedroom two to the rear has been fitted with built in, mirrored wardrobes, while bedroom three to the front is a comfortable single.
- Servicing both bedrooms on this floor is the family bathroom fitted with a white suite including a bath with a mains shower over, pedestal sink and WC.
- On the second floor, a landing area with roof window leads into the spacious master bedroom with large ensuite shower room.
- Outside there is a enclosed garden with a patio area perfect for alfresco dining. A pedestrian door provides access into the single garage, while the tarmac driveway provides ample off street parking.



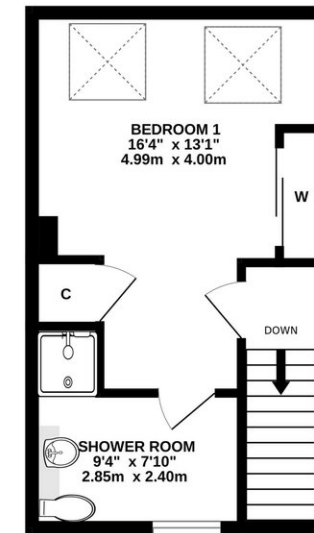
GROUND FLOOR



1ST FLOOR



2ND FLOOR



Whilst every attempt has been made to ensure the accuracy of the floorplan contained here, measurements of doors, windows, rooms and any other items are approximate and no responsibility is taken for any error, omission or mis-statement. This plan is for illustrative purposes only and should be used as such by any prospective purchaser. The services, systems and appliances shown have not been tested and no guarantee as to their operability or efficiency can be given.
Made with Metropix ©2024

DISCLAIMER

CONSUMER PROTECTION FROM UNFAIR TRADING REGULATIONS 2008. The Agent has not tested any apparatus, equipment, fixtures and fittings or services and so cannot verify that they are in working order or fit for the purpose. A Buyer is advised to obtain verification from their Solicitor or Surveyor. References to the Tenure of a Property are based on information supplied by the Seller. The Agent has not had sight of the

title documents. A Buyer is advised to obtain verification from their Solicitor. Items shown in photographs are not included unless specifically mentioned within the sales particulars. They may however be available by separate negotiation. Buyers must check the availability of any property and make an appointment to view before embarking on any journey to see a property.

DATA PROTECTION. Personal information provided by customers wishing to receive information and/or services from the estate agent and the Property Sharing Experts (of which it is a member) for the purpose of providing services associated with the business of an estate agent but specifically excluding mailing or promotions by a third party. If you do not wish your personal information to be used for any of these purposes, please notify us.