

Meadow View

BISHOP'S DRIVE, BALTONSBOROUGH, SOMERSET, BA6 8FX

Garden View

(Plot 18)

Ready
Summer
2024



An exquisite example of a traditional & characterful flemish-bond, brick-built detached home

Four beds, three baths | Utility/Boot Room | Countryside views
Double garage with private driveway | South West facing rear garden

- Quartz worktops
- Air source heat pump
- Private 7kW EV Charging Point
- Woodburning stove
- 10 year warranty
- Superfast broadband capabilities

A development by:
GALION

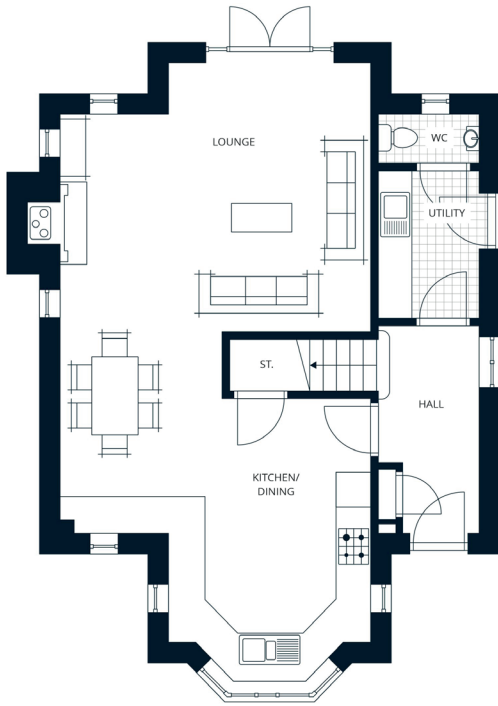
Asking price: £750,000

Selling agents:

holland&odam

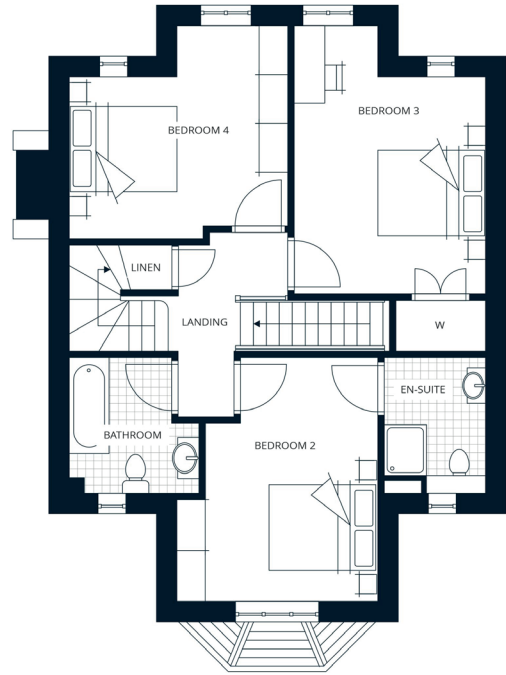
01458 833123

hollandandodam.co.uk



Ground Floor

Kitchen/Dining/Lounge 10.20m x 5.47m

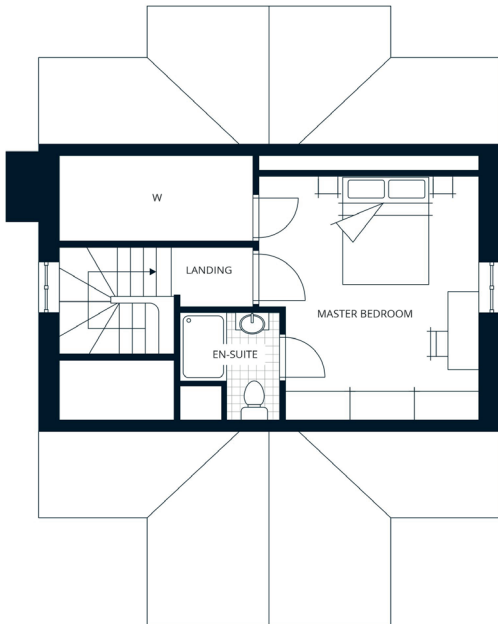


First Floor

Bedroom 2 3.56m x 4.29m

Bedroom 3 4.76m x 3.41m

Bedroom 4 3.78m x 3.89m



Second Floor

Master Bedroom 3.89m x 4.34m



Please note: All dimensions given are approximate and are shown width x length.
All imagery is computer generated and indicative only.