





£650,000

To View:

Holland & Odam

3 Farm Road, Street

Somerset, BA16 0BJ

01458 841411

street@hollandandodam.co.uk



4



2



3

Energy
Rating

C

Council Tax Band E



Services

Mains electricity, gas, water and drainage are connected. Gas central heating system.

Local Authority

Somerset Council

03001232224

somerset.gov.uk

Tenure

Freehold

Directions

The property is situated in the hamlet of Pedwell set back from the A361. Village amenities can be found at Ashcott with a primary school, Parish Church and two local Inns. Street is approximately 4 miles and offers a comprehensive range of shopping, sporting and recreational facilities including both indoor and open air swimming pools and Strode Theatre. The county town of Taunton is approximately 22 miles whilst the nearest M5 motorway interchange at Dunball, Bridgwater is approximately 13 miles.

Description

Welcome to South Pedwell House, a beautifully proportioned and substantial family home offering over 2,560 sq. ft. of internal space. Set in a peaceful rural location, this impressive property effortlessly blends generous living areas with practical family comforts, stylish finishes and a wealth of character features creating a warm and timeless atmosphere throughout.

Step through the welcoming lobby into a fabulous reception room, where character features including a flagstone floor, deep-silled sash windows and a charming multi-fuel stove create an inviting and atmospheric space. Ideal for formal dining or relaxed family living, this versatile room adapts effortlessly to suit a variety of needs. Continue through to the expansive sitting room, which extends over 24 feet and is flooded with an abundance of natural light. Featuring a walk-out bay with French doors, offering direct access to the garden and creating a seamless connection between indoor and outdoor living. Inside, the eye is immediately drawn to the striking inglenook fireplace, complete with a stone hearth and rustic wooden mantle beam, providing a dramatic and inviting focal point to this impressive space. The stunning country-style kitchen is a true centrepiece of the home both stylish and practical. Beautifully fitted with a comprehensive range of wall, base, and drawer units, it also features a central island, Belfast sink and an Aga, complemented by integrated appliances including an oven, hob, and fridge/freezer. A pantry-style cupboard offers excellent additional storage, while a unique porthole window adds a charming touch of character. A walk-out bay with French doors opens directly to the garden, filling the space with natural light. With plenty of room for a family-sized dining table and chairs, this impressive kitchen is perfectly designed for both everyday living and entertaining. Completing the ground floor accommodation is a convenient cloakroom with WC, along with plumbing for laundry facilities, providing added practicality for everyday living.

Location

From Street, head west on the A39 towards Bridgwater and the M5. After passing through the village of Walton, turn left at The Pipers Inn junction onto the A361. Continue along this road into Pedwell. Shortly after passing Pedwell Caravan Park on your left, take the right-hand turn onto Pedwell Hill. South Pedwell House is located immediately on your right-hand side and will be clearly identified by our for sale board.



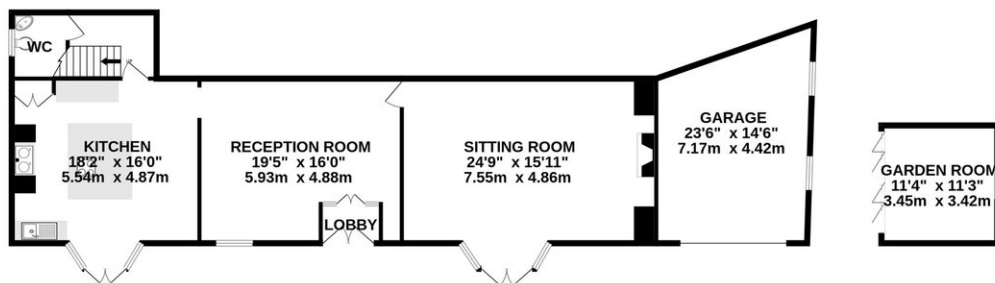


The property is approached through ornate iron gates, opening onto a sweeping gravel driveway that curves gracefully up to the house, setting a sense of grandeur from the outset. A charming verandah spans the front of the property, offering a sheltered spot to enjoy views over the gardens and enhancing the home's elegant façade. To the front, a generous expanse of lawn is bordered by a variety of mature trees, creating privacy and a peaceful, parkland-style feel. The landscaped gardens are thoughtfully arranged into distinct areas, including raised vegetable beds, soft fruit patches, and an established apple tree, ideal for those keen on home-grown produce. A spacious decked terrace provides a perfect space for alfresco dining and entertaining, surrounded by vibrant planting and tropical-style foliage. A beautiful garden room, complete with bi-fold doors, power, and lighting, offers a stylish and versatile space ideal as a home office, studio, or summer lounge. There are multiple seating areas throughout the garden, each offering a peaceful retreat. A double garage with an up-and-over door, power, and lighting completes the picture, providing ample storage or workshop potential.

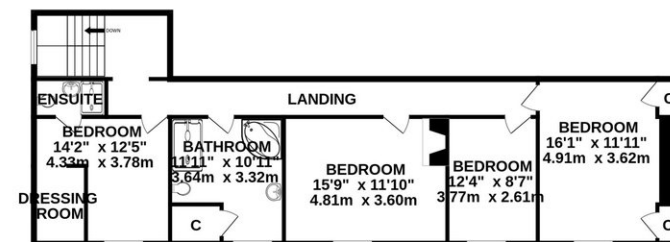
- A stunning inglenook fireplace with stone hearth and rustic mantle creates a warm, characterful focal point in the spacious sitting room.
- An Aga, Belfast sink, central island and French doors to the garden make this kitchen both stylish and practical for modern family living.
- Four light-filled bedrooms featuring high ceilings and sash windows, combining comfort with timeless period charm.
- Blending style and function, the bathroom includes a free standing bath, curved shower and traditional heated towel rail.
- Ornate iron gates open onto a sweeping gravel driveway, creating an impressive and private approach that perfectly sets the tone for this elegant country home.
- Mature gardens with lawn, raised vegetable beds, soft fruit patches and an apple tree perfect for relaxed outdoor living and home grown produce.



GROUND FLOOR
1501 sq.ft. (139.4 sq.m.) approx.



1ST FLOOR
1060 sq.ft. (98.5 sq.m.) approx.



TOTAL FLOOR AREA : 2561 sq.ft. (237.9 sq.m.) approx.

Whilst every attempt has been made to ensure the accuracy of the floorplan contained here, measurements of doors, windows, rooms and any other items are approximate and no responsibility is taken for any error, omission or mis-statement. This plan is for illustrative purposes only and should be used as such by any prospective purchaser. The services, systems and appliances shown have not been tested and no guarantee as to their operability or efficiency can be given.
Made with Metropix ©2025

RESIDENTIAL LETTINGS : Holland & Odam offer a comprehensive residential lettings service. Whether you are a landlord or a tenant, please contact any of our offices to discuss your requirements.

FINANCIAL SERVICES : Would you like to have the opinion of a fully Independent Financial Adviser who has access to the entire mortgage market place and could help you consider all aspects of financing your proposed purchase? If so, please ring us on 01458 841411 and we can arrange a free consultation for you at a time and a place to suit you with The Levels Financial. *

CONSUMER PROTECTION FROM UNFAIR TRADING REGULATIONS 2008 : The Agent has not tested any apparatus, equipment, fixtures and fittings or services and so cannot verify that they are in working order or fit for the purpose. A Buyer is advised to obtain verification from their Solicitor or Surveyor. References to the Tenure of a Property are based on information supplied by the Seller. The Agent has not had sight of the title documents. A Buyer is advised to obtain verification from their Solicitor. Items shown in photographs are not included unless specifically mentioned within the sales particulars. They may however be available by separate negotiation. Buyers must check the availability of any property and make an appointment to view before embarking on any journey to see a property.

DATA PROTECTION : Personal information provided by customers wishing to receive information and/or services from the estate agent and the Property Sharing Experts (of which it is a member) for the purpose of providing services associated with the business of an estate agent but specifically excluding mailing or promotions by a third party. If you do not wish your personal information to be used for any of these purposes, please notify us.

*YOUR HOME MAY BE REPOSSESSED IF YOU DO NOT KEEP UP REPAYMENTS ON YOUR MORTGAGE OR ANY OTHER DEBT SECURED ON IT. WRITTEN QUOTATIONS ARE AVAILABLE ON REQUEST.