





£299,500

To View:

Holland & Odam

3 Farm Road, Street

Somerset, BA16 0BJ

01458 841411

street@hollandandodam.co.uk



2



1

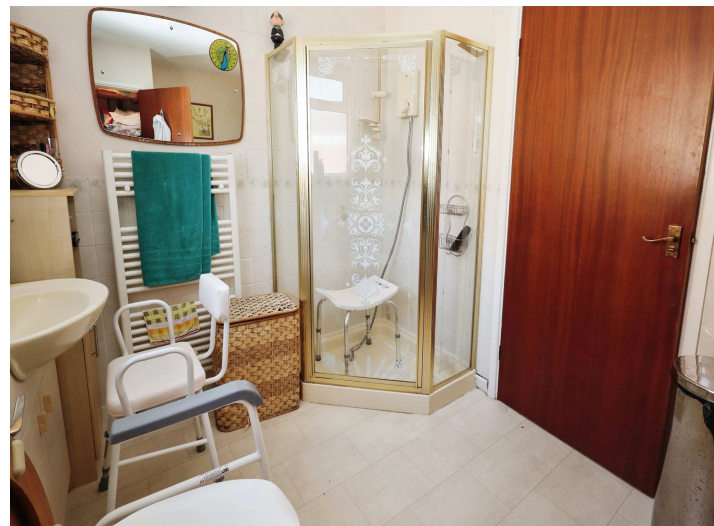


2

Energy
Rating

D

Council Tax Band C



Services

Mains electricity, gas, water and drainage are connected. Gas central heating system.

Local Authority

Somerset Council

03001232224

somerset.gov.uk

Tenure

Freehold

Directions

From the High Street, proceed in a westerly direction into West End, passing the Co-Op supermarket on the right. Take the next left turning into Brookleigh and follow the road to the end, continuing straight on at the junction. Number 14 will be identified on your right hand side.

Description

Extended modern semi detached bungalow, having two double bedrooms, sitting/dining room, kitchen with breakfast room off, conservatory and family bathroom. There is driveway parking at the side, for 2-3 cars, with access into a large rear garden and patio. Available with vacant possession upon completion.

From the entrance hall, doors lead to all the principal rooms, including two well-proportioned double bedrooms and the family bathroom. The spacious sitting room features a fireplace with inset gas fire and opens into the extended section of the bungalow, where the living/dining space continues seamlessly. This bright and welcoming area benefits from sliding patio doors that open onto the rear terrace and garden, with a serving hatch connecting to the kitchen.

The kitchen/breakfast room is fitted with a modern range of wall, base, and drawer units, complemented by integrated appliances including a double oven and gas hob, with space and plumbing for a dishwasher and fridge. Forming part of the rear extension, the kitchen flows into the adjoining breakfast room and then into the conservatory, which is glazed on two sides and opens onto the attractive rear garden and patio. The utility room, formerly the original kitchen, offers excellent storage, a sink unit, plumbing for a washing machine and tumble dryer, and houses the wall-mounted gas central heating boiler. A side door provides access outside, along with an internal door to a useful cloakroom. Both double bedrooms are located at the front of the bungalow, with bedroom one benefiting from a bay window, while bedroom two also enjoys a bright front-facing aspect.

Location

The property is situated towards the western outskirts of the town, being within half a mile of the town centre with its comprehensive range of shopping facilities. Street also offers good sporting and recreational facilities including both indoor and open-air swimming pools and Strode Theatre. The historic town of Glastonbury is two miles, the Cathedral City of Wells nine miles and the M5 Junction 23 is twelve miles. Bristol, Bath, Taunton and Exeter are each within commuting distance.





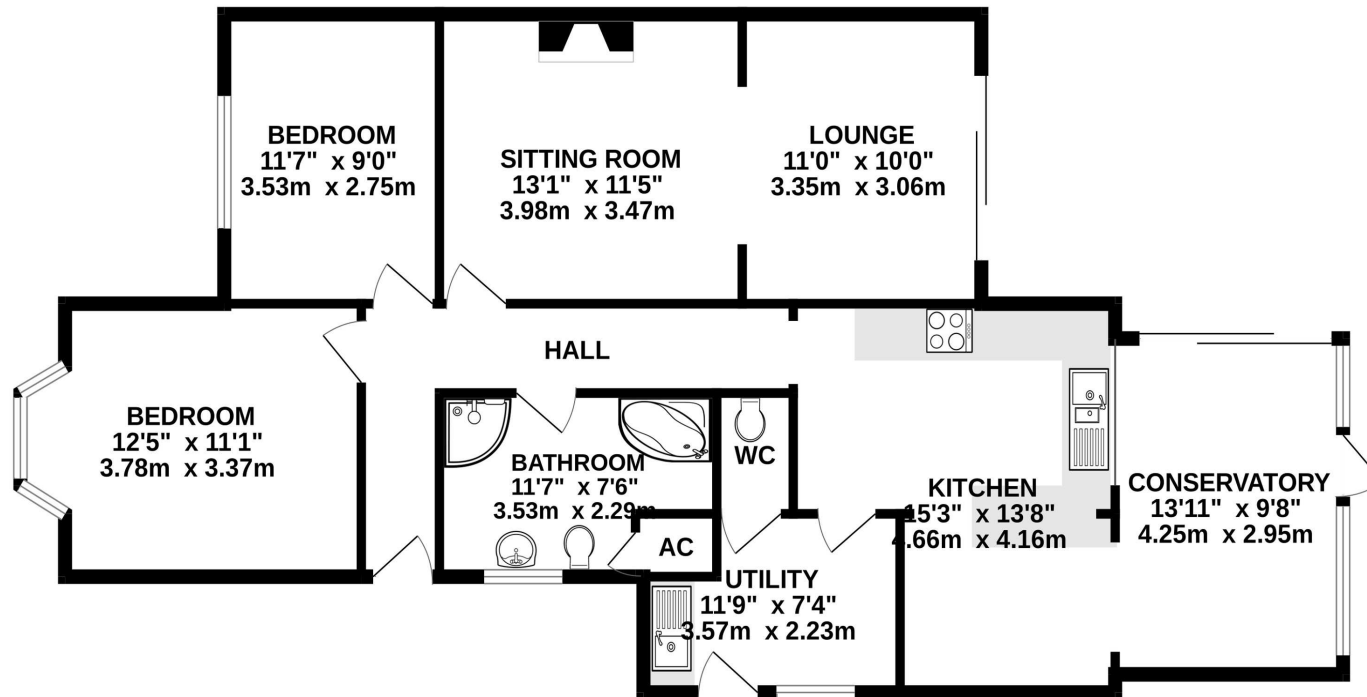
The bungalow is set back from the road behind a lawned garden, with a driveway to one side, providing parking for 2-3 cars. Access can be gained here into the rear garden. A patio extends from the immediate rear of the bungalow with a wooden build covered gazebo, ideal for entertaining and family barbecues, before opening out onto the lawned garden. Here, there is lovely water feature and ornamental pond to one side. A footpath dissects the lawn, leading down the foot of the garden, where there is a timber garden shed.



- Spacious extended semi detached bungalow with driveway parking to the side and a large rear garden
- Two well-proportioned double bedrooms, both with front-facing aspects; bedroom one features a bay window.
- Spacious sitting room with feature fireplace, extending into a bright rear living/dining area with patio doors to the garden.
- Modern kitchen/breakfast room with integrated double oven and gas hob, plus space for a dishwasher and fridge.
- Extended layout includes a breakfast room and conservatory, glazed on two sides and opening onto the rear patio.
- Versatile utility room with fitted units, sink, appliance space, and access to a cloakroom and rear garden.
- Lovely rear garden with patio area, perfect for relaxing or entertaining, accessed directly from the main living space.



GROUND FLOOR 1086 sq.ft. (100.9 sq.m.) approx.



TOTAL FLOOR AREA : 1086 sq.ft. (100.9 sq.m.) approx.

Whilst every attempt has been made to ensure the accuracy of the floorplan contained here, measurements of doors, windows, rooms and any other items are approximate and no responsibility is taken for any error, omission or mis-statement. This plan is for illustrative purposes only and should be used as such by any prospective purchaser. The services, systems and appliances shown have not been tested and no guarantee as to their operability or efficiency can be given.
Made with Metropix ©2025

RESIDENTIAL LETTINGS : Holland & Odam offer a comprehensive residential lettings service. Whether you are a landlord or a tenant, please contact any of our offices to discuss your requirements.

FINANCIAL SERVICES : Would you like to have the opinion of a fully Independent Financial Adviser who has access to the entire mortgage market place and could help you consider all aspects of financing your proposed purchase? If so, please ring us on 01458 841411 and we can arrange a free consultation for you at a time and a place to suit you with The Levels Financial. *

CONSUMER PROTECTION FROM UNFAIR TRADING REGULATIONS 2008 : The Agent has not tested any apparatus, equipment, fixtures and fittings or services and so cannot verify that they are in working order or fit for the purpose. A Buyer is advised to obtain verification from their Solicitor or Surveyor. References to the Tenure of a Property are based on information supplied by the Seller. The Agent has not had sight of the title documents. A Buyer is advised to obtain verification from their Solicitor. Items shown in photographs are not included unless specifically mentioned within the sales particulars. They may however be available by separate negotiation. Buyers must check the availability of any property and make an appointment to view before embarking on any journey to see a property.

DATA PROTECTION : Personal information provided by customers wishing to receive information and/or services from the estate agent and the Property Sharing Experts (of which it is a member) for the purpose of providing services associated with the business of an estate agent but specifically excluding mailing or promotions by a third party. If you do not wish your personal information to be used for any of these purposes, please notify us.

*YOUR HOME MAY BE REPOSSESSED IF YOU DO NOT KEEP UP REPAYMENTS ON YOUR MORTGAGE OR ANY OTHER DEBT SECURED ON IT. WRITTEN QUOTATIONS ARE AVAILABLE ON REQUEST.