



£249,950

At a glance...



2



1



1

EPC

D

COUNCIL
TAX

C

holland
& odam

79 Portland Road
Street
Somerset
BA16 9PZ

TO VIEW

3 Farm Road, Street,
Somerset BA16 0BJ

01458 841411

street@hollandandodam.co.uk



Directions

Proceed along the A39 Street bypass towards the neighbouring village of Walton. Pass through three sets of traffic lights and take a right turn into Houndwood Drove, just before the roundabout and Sainsbury's. Continue along Houndwood Drove following the road around to the left, and proceed until you reach Portland Road where the property will be found on your right hand side.

Services

Mains electricity, gas, water and drainage are connected. Gas central heating system.

Local Authority

Somerset Council
0300 1232224
somerset.gov.uk

Tenure

Freehold



Location

Portland Road is located on the north western edge of Street adjacent to countryside. Street is a popular mid Somerset town with an attractive choice of shops in the Clarks Village Complex. Street also provides a theatre, health centre, indoor and open air pools, college, primary and secondary schools and a choice of pubs and restaurants. The historic town of Glastonbury is 2 miles, the Cathedral City of Wells 8 miles and the nearest M5 motorway interchange, Junction 23, is 12 miles. Bristol, Bath, Taunton and Yeovil are each within commuting distance.

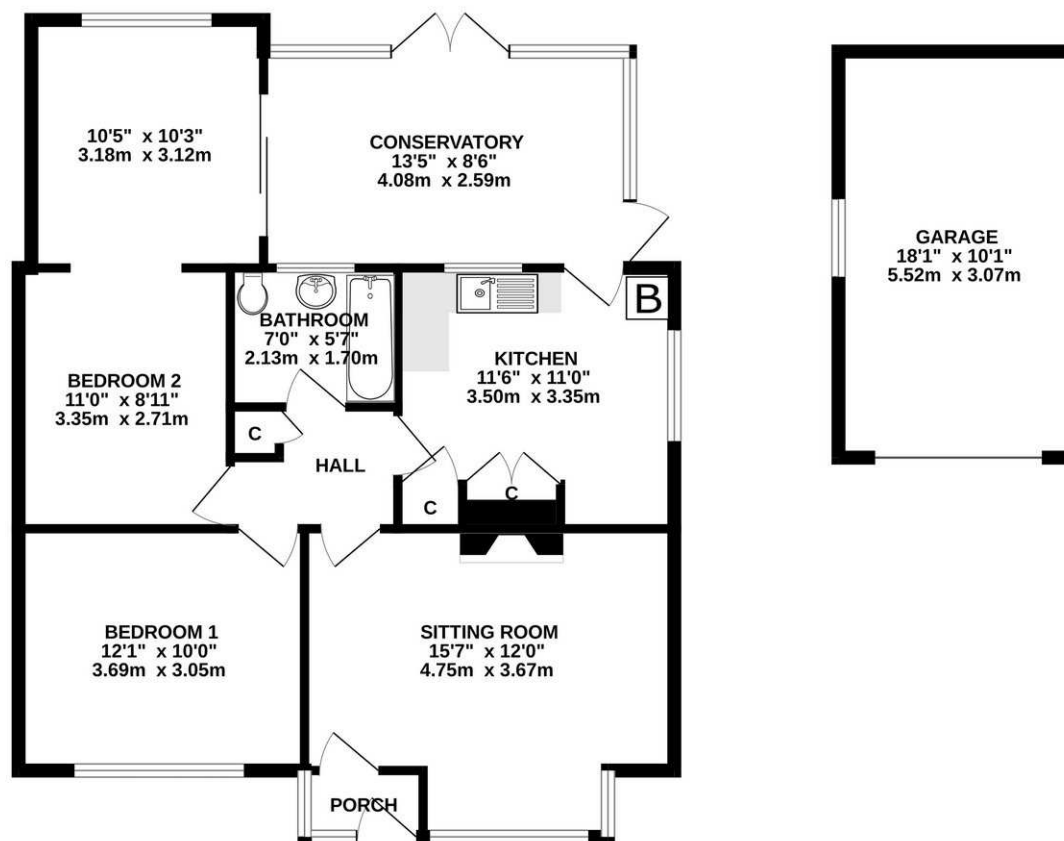
Insight

Located on the outskirts of Street, yet conveniently situated close to Sainsbury and other local stores, this extended detached bungalow comprises of two bedrooms, sitting room, kitchen/dining room, conservatory and bathroom. The bungalow is set back from the road, with driveway parking to a detached garage and an enclosed rear garden enjoying a sunny aspect.

- In need of renovation throughout this is the perfect opportunity for those looking to put their stamp on a property.
- Located on the outskirts of Street, this extended detached bungalow offers both space and convenience, with nearby access to Sainsbury's and other local shops.
- The property features two well-sized bedrooms, providing ample space for a small family or couple.
- A comfortable sitting room plenty of light from the square bay window to the front.
- The kitchen/dining room comprises a modern range of units, with a boiler cupboard and pantry.
- A bright conservatory provides additional living space, with access to the rear garden.
- The bungalow includes a bathroom, accessed from the central hall.
- The exterior boasts a private driveway leading to a detached garage, along with an enclosed garden that benefits from a sunny aspect.



GROUND FLOOR
1035 sq.ft. (96.2 sq.m.) approx.



TOTAL FLOOR AREA : 1035 sq.ft. (96.2 sq.m.) approx.

Whilst every attempt has been made to ensure the accuracy of the floorplan contained here, measurements of doors, windows, rooms and any other items are approximate and no responsibility is taken for any error, omission or mis-statement. This plan is for illustrative purposes only and should be used as such by any prospective purchaser. The services, systems and appliances shown have not been tested and no guarantee as to their operability or efficiency can be given.
Made with Metropix ©2024

DISCLAIMER

CONSUMER PROTECTION FROM UNFAIR TRADING REGULATIONS 2008. The Agent has not tested any apparatus, equipment, fixtures and fittings or services and so cannot verify that they are in working order or fit for the purpose. A Buyer is advised to obtain verification from their Solicitor or Surveyor. References to the Tenure of a Property are based on information supplied by the Seller. The Agent has not had sight of the

title documents. A Buyer is advised to obtain verification from their Solicitor. Items shown in photographs are not included unless specifically mentioned within the sales particulars. They may however be available by separate negotiation. Buyers must check the availability of any property and make an appointment to view before embarking on any journey to see a property.

DATA PROTECTION. Personal information provided by customers wishing to receive information and/or services from the estate agent and the Property Sharing Experts (of which it is a member) for the purpose of providing services associated with the business of an estate agent but specifically excluding mailing or promotions by a third party. If you do not wish your personal information to be used for any of these purposes, please notify us.