



**Flat 4, 2, Palmerstone Court Rosebery Place, NW7 2FA**  
**£550,000**

**richard  
james**  
ESTATE AGENTS

T 020 8959 9191  
E [enquiries@richardjames.biz](mailto:enquiries@richardjames.biz)  
A 21 The Broadway | Mill Hill  
London | NW7 3DA

[richardjames.biz](http://richardjames.biz)









## Property Description

A stunning Two double Bedroom, Two Bathroom (one en-suite shower room) second floor apartment situated in a sought after modern gated development on Rosebery Place, only a short walk to Mill Hill Broadway.

Having been finished to a high standard throughout the property features a large open-plan fitted Kitchen/Reception room, Two double Bedrooms (master bedroom with en-suite shower room) and second Bathroom.

Additional benefits include an allocated off street parking, lift access and is conveniently located in an excellent position close to Mill Hill Thameslink train station and to the shops, coffee shops & restaurants on Mill Hill Broadway.

Council Tax Band E


Sole Agent

## Key Features

- FIRST FLOOR
- STUNNING OPEN PLAN KITCHEN/LIVING/DINING ROOM
- RESERVED PARKING SPACE
- SOUGHT AFTER MODERN GATED DEVELOPMENT
- SHARE OF FREEHOLD
- TWO DOUBLE BEDROOMS
- TWO BATHROOMS (ONE EN-SUITE SHOWER ROOM)
- LIFT ACCESS
- WALKING DISTANCE TO THE AMENITIES OF MILL HILL BROADWAY

## Important Information

- **Price:** £550,000
- **Tenure:** Share of Freehold
- **Council Tax Band:** E
- **EPC:** B
- **Locaton:** London

Energy Efficiency Rating		
	Current	Potential
Very energy efficient - lower running costs		
(92 plus) <b>A</b>		
(81-91) <b>B</b>	85	85
(69-80) <b>C</b>		
(55-68) <b>D</b>		
(39-54) <b>E</b>		
(21-38) <b>F</b>		
(1-20) <b>G</b>		
Not energy efficient - higher running costs		
<b>England &amp; Wales</b>	EU Directive 2002/91/EC 	







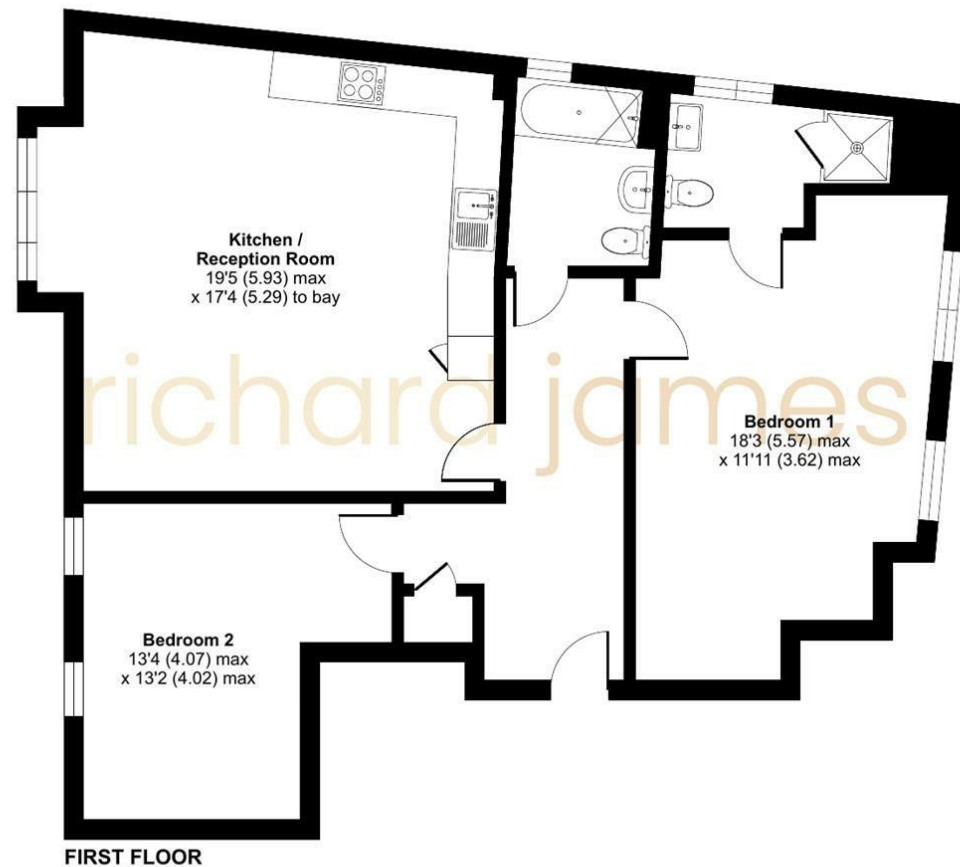






Approximate Area = 952 sq ft / 88.4 sq m

For identification only - Not to scale



Floor plan produced in accordance with RICS Property Measurement 2nd Edition, Incorporating International Property Measurement Standards (IPMS2 Residential). © nctechcom 2025. Produced for Richard James Estate Agents. REF: 1242166

As agents we have not tested any apparatus, equipment, fixtures, fittings or services, and so cannot verify that they are in working order or fit for the purpose. As a buyer you are advised to obtain verification from your Solicitor/Conveyancer or Surveyor, if there are any points of particular importance to you. Reference to the tenure of the property is based on information given to us by the seller, as we well not have had sight of the title documents. You are advised to obtain verification from your Solicitor/Conveyancer. Before viewing a property, do please check with us as to its availability, and also request clarification or information on any points of particular interest to you, to save you any possible wasted journeys. Also, photographs are for illustration only and may depict items which are not for sale or included in the sale of the property. All sizes are approximate; all dimensions include wardrobe space where applicable. While we believe that the area of the property has been accurately calculated, any prospective buyer who considers this feature to be particular important is strongly recommended to have the site measurements checked by their own surveyor before submitting an offer to purchase.



**richard  
james**

ESTATE AGENTS

T 020 8959 9191  
E [enquiries@richardjames.biz](mailto:enquiries@richardjames.biz)  
A 21 The Broadway | Mill Hill  
London | NW7 3DA

[richardjames.biz](http://richardjames.biz)