

**34 Uphill Road
Mill Hill
NW7 4PP**



An imposing detached home situated in one of Mill Hill's most premier addresses sitting in an extensive plot with heated swimming pool and a large driveway.

This home, which is circa 4350 sq ft, has been maintained to a high and exacting standard throughout and offers well-proportioned accommodation ideal for both family living and entertaining on a grand scale. The entrance leads to an extensive driveway and garage providing off street parking for a number of cars. When you enter the house you have a large hallway leading to a large kitchen breakfast and living room with patio doors leading to a stunning garden. There is another double reception room a play room leading to the garage (currently being used as a gym) a study and a utility room

On the first floor you have a master bedroom suite with views over the gardens and includes an en suite dressing room a luxury en suite bathroom and a balcony. There are 4 further double bedrooms and a 6th bedroom/study room.

The property has potential to go into the loft and make enough space for two further bedrooms 2 en-suite bathrooms and 'living room' in between (subject to the necessary planning permission)



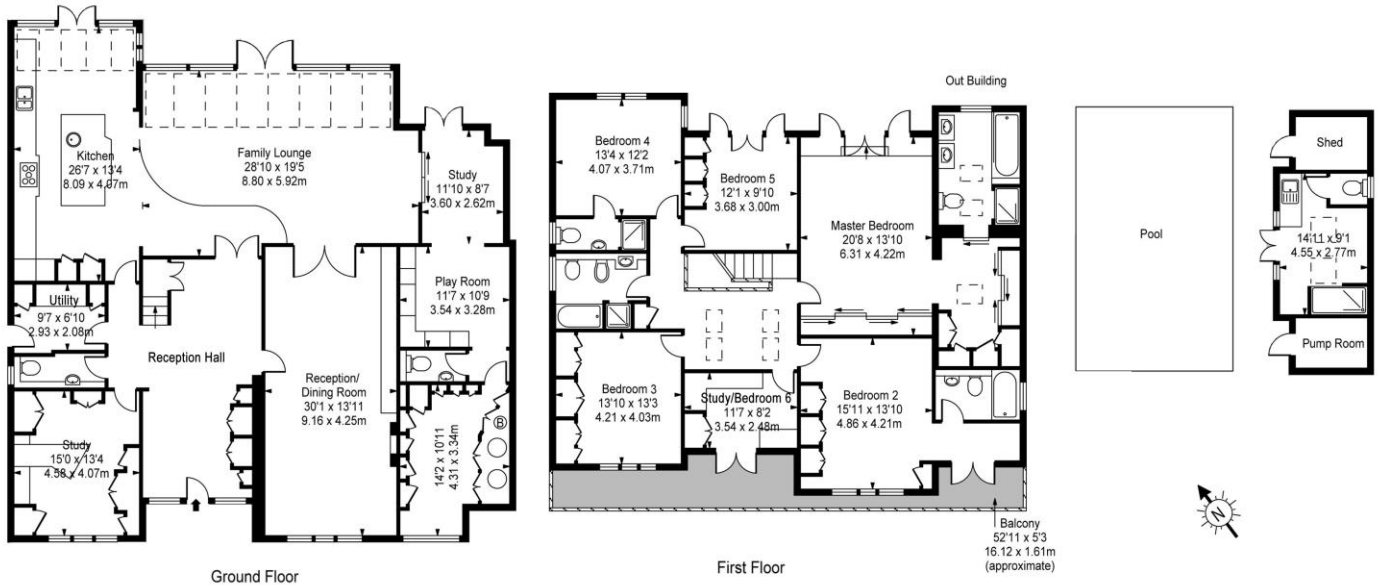












Approx. Gross Internal Area 4387 Sq Ft - 407.56 Sq M
(Including Out Building)

ACCOMMODATION / AMENITIES

* STUNNING DETACHED FAMILY HOME * MILL HILL'S FINEST TURNING * LANDSCAPED REAR GARDEN * HEATED SWIMMING POOL * CARRIAGE DRIVEWAY * WALKING DISTANCE TO MILL HILL BROADWAY * 4350 SQFT *

TERMS

TENURE : Freehold

BOROUGH : Barnet

PRICE : Guide Price - £4,000,000 Subject to Contract

As agents we have not tested any apparatus, equipment, fixtures, fittings or services, and so cannot verify that they are in working order or fit for the purpose. As a buyer you are advised to obtain verification from your Solicitor/Conveyancer or Surveyor, if there are any points of particular importance to you. Reference to the tenure of the property is based on information given to us by the seller, as we will not have had sight of the title documents. You are advised to obtain verification from your Solicitor/Conveyancer. Before viewing a property, do please check with us as to its availability, and also request clarification or information on any points of particular interest to you, to save you any possible wasted journeys. Also, photographs are for illustration only and may depict items which are not for sale or included in the sale of the property. All sizes are approximate; all dimensions include wardrobe space where applicable. While we believe that the area of the property has been accurately calculated, any prospective buyer who considers this feature to be particularly important is strongly recommended to have the site measurements checked by their own surveyor before submitting an offer to purchase.