





Crowther|Key

SALES


£101,995

 2

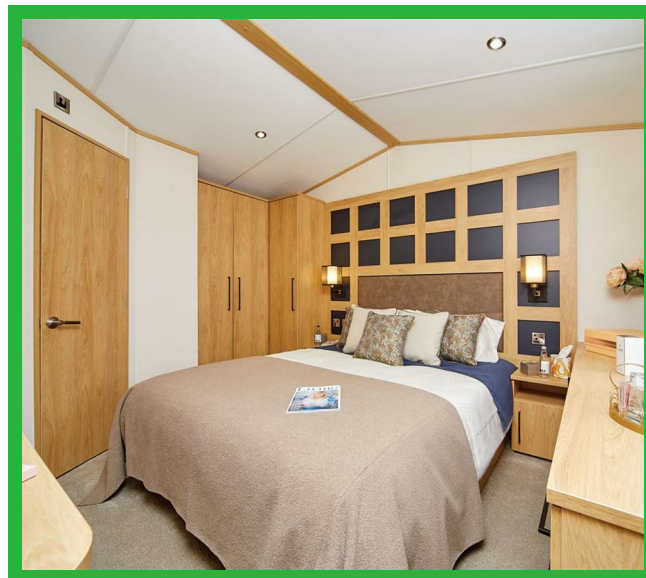
 2



Carnaby Chantry Lodge Ashbourne
Heights Park
Ashbourne DE6 1LE

Energy Efficiency Rating		
	Current	Potential
Very energy efficient - lower running costs		
(92 plus) A		
(81-91) B		
(69-80) C		
(55-68) D		
(39-54) E		
(21-38) F		
(1-20) G		
Not energy efficient - higher running costs		
England & Wales	EU Directive 2002/91/EC	

CALL US ON 01298 214441 OR EMAIL sales@crowtherkey.co.uk



Carnaby Chantry Lodge 2024 13ft x 41ft 2 Bedroom Sleeps 4

Full description

CarnabyChantryLodge 2024 13ft X 41ft 2 Bedroom Sleeps 4

Exclusive to Park Holidays UK, the outstanding Carnaby Chantry Lodge captures the essence of a luxury holiday lifestyle. Ashbourne Heights Holiday Park has miles of picturesque towns and beautiful countryside waiting to be explored.

The Carnaby Chantry Lodge boasts a spacious lounge area which is expertly equipped to withstand busy family life, featuring the cosy furnishings and classic colour scheme.

The Carnaby Chantry Lodge is perfectly suited for entertaining your friends and family with all the kitchen appliances you would find at home including an oven, fridge freezer and microwave with the centre of the kitchen featuring a grand range cooker.

The Carnaby Chantry Lodge features a stunning master bedroom with plenty of storage space. The neutral colour scheme and immaculate furnishings are all beautifully finished to a high standard, and this continues within the en-suite.

Further to the stunning master bedroom is the brilliantly designed second bedroom, comprising of two twin beds, and built in furniture, all finished to a superb standard. A contemporary designed bathroom with all the amenities to make this feel like a home from home. Spacious and bright, it's the ideal holiday home for you and your family.

With the Carnaby Chantry Lodge you'll even have your choice of pitch – what better than to have the freedom to pick your own view!

Can't wait to experience the holiday home lifestyle for yourself? Call our team today to book a VIP appointment.

Misrepresentation Act 1967 \ Consumer Protection from Unfair Trading Regulations 2008 and the Business Protection from Misleading Marketing Regulations 2008

Every care has been taken with the preparation of these Particulars but complete accuracy cannot be guaranteed. If there is any point, which is of particular importance to you, please obtain professional confirmation; alternatively, we will be pleased to check the information for you. We have not tested any apparatus, equipment, fixture, fittings or service and so cannot verify they are in working order, fit for their purpose, or within ownership of the sellers. Items shown in photographs are NOT included unless specifically mentioned in writing within the sales particulars. They may however be available by separate negotiation.

These details are prepared as a general guide only, and should not be relied upon as a basis to enter into a legal contract, or commit expenditure. An interested party should consult their own surveyor, solicitor or other professionals before committing themselves to any expenditure or other legal commitments. If any interested party wishes to rely upon any information from the agent, then a request should be made and specific written confirmation can be provided. The agent will not be responsible for any verbal statement made by any member of staff, as only a specific written confirmation should be relied upon. The agent will not be responsible for any loss other than when specific written confirmation has been requested.

All Dimensions are approximate. Items shown in photographs are NOT included unless specifically mentioned in writing within the sales particulars. They may however be available by separate negotiation.

Misrepresentation Act 1967 and Consumer Protection Regulation

These details are prepared as a general guide only, and should not be relied upon as a basis to enter into a legal contract, or commit expenditure. An interested party should consult their own surveyor, solicitor or other professionals before committing themselves to any expenditure or other legal commitments. If any interested party wishes to rely upon any information from the agent, then a request should be made and specific written confirmation can be provided. The agent will not be responsible for any verbal statement made by any member of staff, as only a specific written confirmation should be relied upon. The agent will not be responsible for any loss other than when specific written confirmation has been requested.