



14 St Bartholomews Road, BS7 9BJ

St Andrews

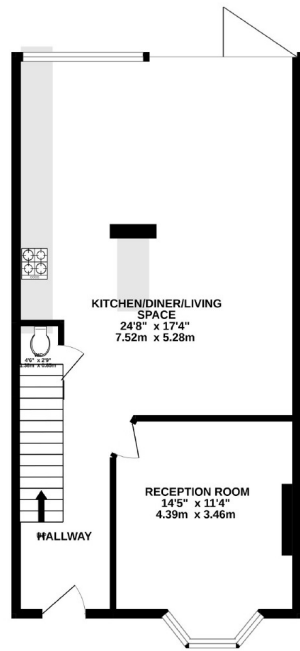


A beautifully finished and extended family home, blending modern finishes with retained period features - found on a popular cul de sac in St Andrews. This position gives great access to many local amenities - these include Gloucester Road, the city centre, local primary school and Montpelier train station.

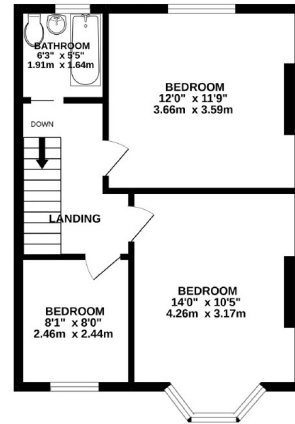
- St Andrews • St Bartholomews Road • 1930's semi detached • Four bedrooms • Separate reception • Impressive extended home • Two bathrooms • Retained period features • Circa 10m garden • Rear access • Circa 1442 sq.ft • EPC - C •



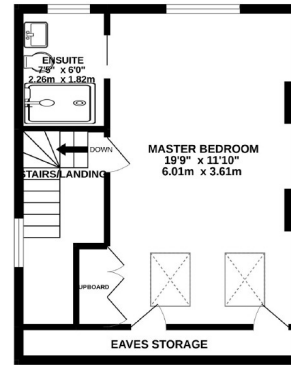
GROUND FLOOR



1ST FLOOR



2ND FLOOR/LOFT CONVERSION



Whilst every attempt has been made to ensure the accuracy of the floorplan contained here, measurements of doors, windows, rooms and any other items are approximate and no responsibility is taken for any error, omission or mis-statement. This plan is for illustrative purposes only and should be used as such by any prospective purchaser. The services, systems and appliances shown have not been tested and no guarantee as to their operability or efficiency can be given.  
Made with Metropix ©2022



## St Andrews - Guide price £660,000

### 4 Bed Semi-detached house

References to the Tenure of a Property are based on information supplied by the Seller. The Agent has not had sight of the title documents. Lease details, service ground rent (where applicable) are given as a guide only and should be checked and confirmed by your solicitor prior to exchange of contracts.



#### Bishopston Branch

201 Gloucester Road, Bishopston, Bristol, BS7 8BG

Call: 0117 9425855

Mail: [bishopstonsales@oceanhome.co.uk](mailto:bishopstonsales@oceanhome.co.uk)

Search: [www.oceanhome.co.uk](http://www.oceanhome.co.uk)